



CENTRAL WASHINGTON UNIVERSITY

EASTERN WASHINGTON UNIVERSITY

THE EVERGREEN STATE COLLEGE

UNIVERSITY OF WASHINGTON

WASHINGTON STATE UNIVERSITY

WESTERN WASHINGTON UNIVERSITY

WASHINGTON STATE

*Council of*  
**Presidents**

**ICRC Fall Meeting**  
**April 2019**

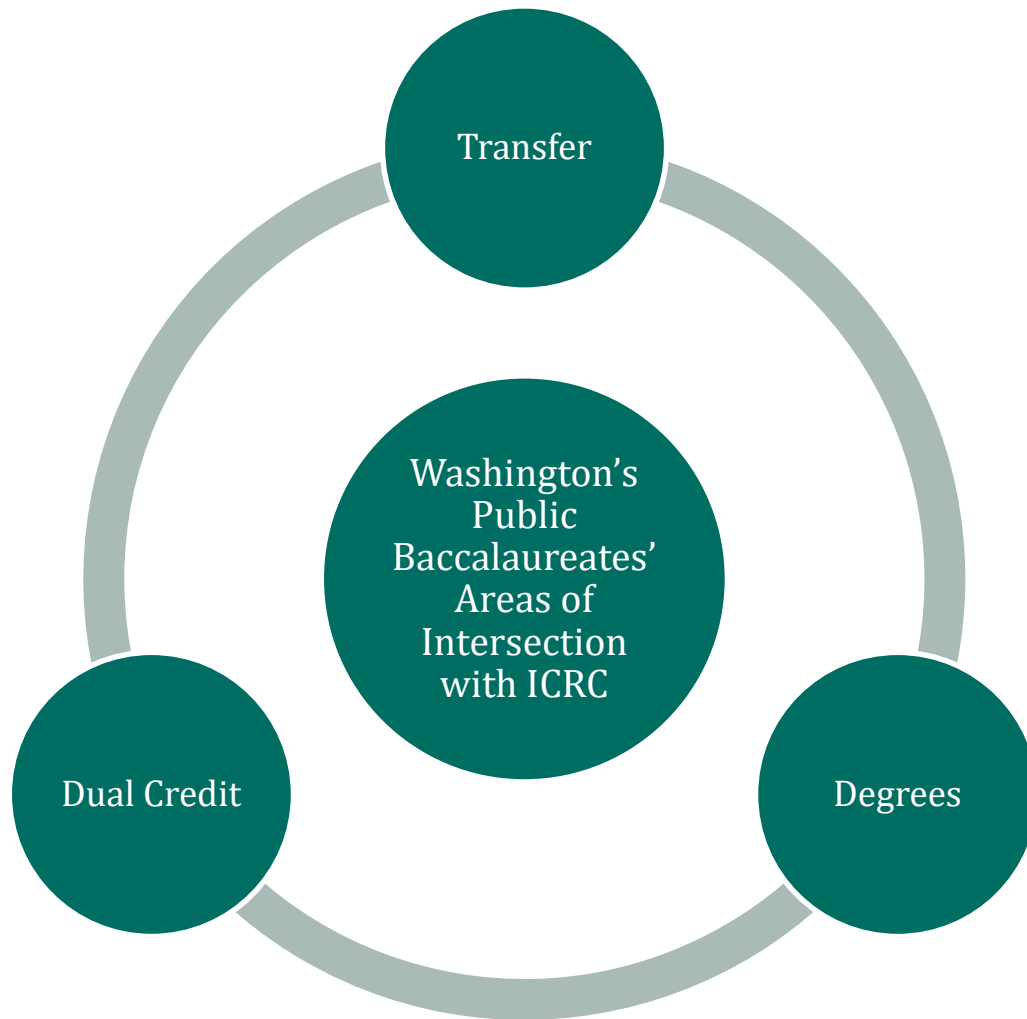
Julie Garver, Director of Policy and Academic Affairs

# ABOUT COP

---

COP is an association of Washington's six public four-year degree granting college and universities. We strive to be a common voice for the public four-year universities and college and the most respected and trusted resource for decision makers on issues affecting public higher education. We foster coordination and collaboration among the public, four-year universities and college as well as with myriad other partners.





# Concurrent Enrollment & College Preparatory Programs with Exams

## Concurrent Enrollment

Finalized WAC revisions.  
Public hearing set May 8

Gearing up for 2020-21  
review process

Final stages of CiHS FAQ

## College Preparatory Programs with Exams

Institutions have completed a majority of review for AP and IB; Process of posting to websites and presenting for AY 2019-20 academic catalogs

Developing a CPPE FAQ

## Outreach

Dual Credit Event Planning

Engaged with key state stakeholders

# Transfer and Degrees

---

## Transfer Focused Information



- COP public baccalaureate transfer
- Joint COP, ICW and SBCTC transfer
- Statway Sector Statement

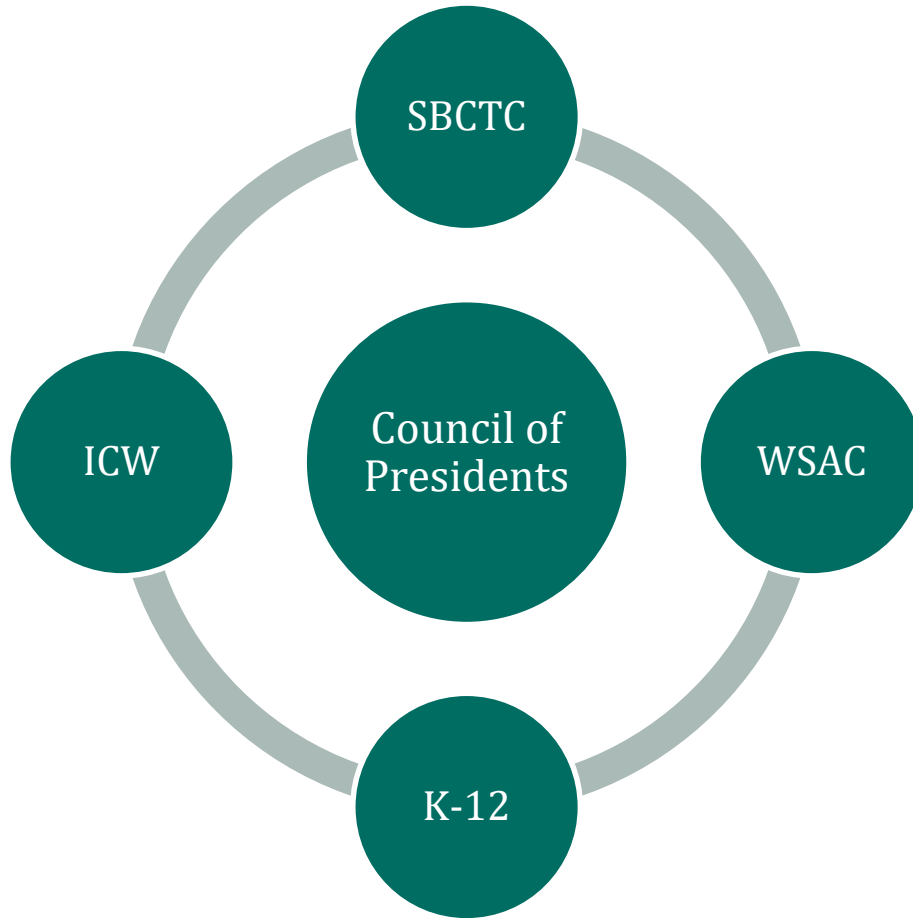
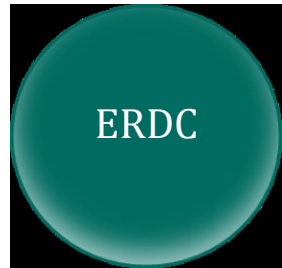
## Degrees



- BAS Degrees: Collaboration and Cross-sector communication
- Lead ICAPP work; Developing FAQ about the degree planning process

# Education Partners

---



# Working Across Sectors and Agencies

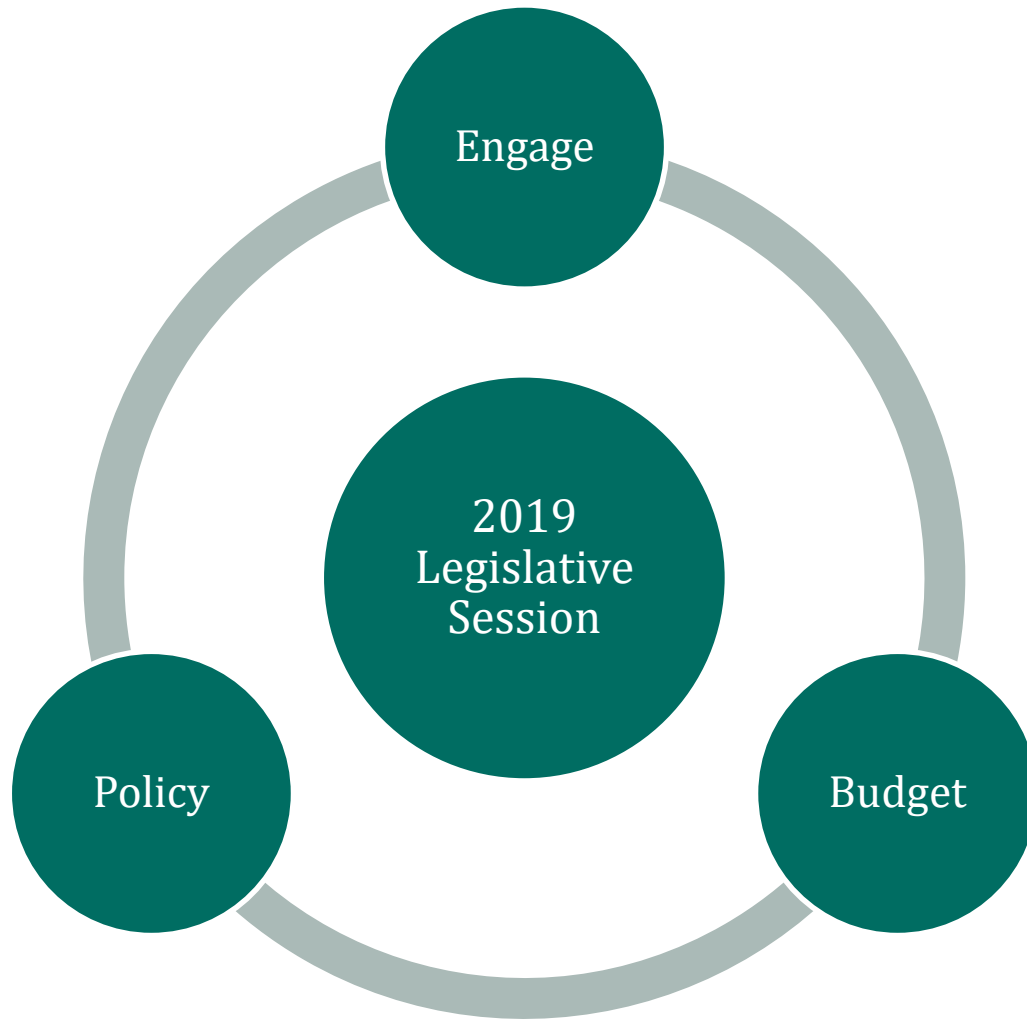
---

## Degree Pathways

Reviewing Degree-Authorization WAC  
Washington Computer Science and Engineering Council (WACSE)

## Outreach/Initiatives

Career Connected Learning  
Multi-Sector Work Group Public Benefits Access  
Pathways Forum  
Complete Count Committee  
Future of Work Task Force  
Credential Engine  
Action Alliance for Suicide Prevention  
Washington Council  
STEM Alliance  
WSAC Adult Reengagement





# Key Legislative Dates

---

March Updated Revenue Forecast

March House and Senate Release Budget Proposals

April 3 Policy Cut-Off Opposite Chamber

April 9 Fiscal Cut-Off Opposite Chamber

April 17 Opposite Chamber Cut-Off

April 28 Last Day of the Regular Session

July 1 First Day of the 2019-21 Biennium

# Key Academic Policy Legislation

---

## **SB 5410**

College preparatory programs with exams

## **HB 1734**

Requires accreditation for CiHS programs

## **HB 1599**

Makes changes to high school graduate requirements

## **SB 5327**

Career connected learning

# House Proposed Operating Budget

## CWU

- \$584,000K - Game On! Program
- \$85,000K - HB 1039 Opioid Overdose Medication

## EWU

- \$400,000K - NW Autism Center
- \$250,000K - Lucy Covington Center
- \$32,000K - HB 1039 Opioid Overdose Medication

## WWU

- \$70,000K - HB 1039 Opioid Overdose Medication

## UW

- \$167,000K - Behavioral Health Campus
- \$400,000K - Behavioral Health Online Courses
- \$50,000K - HB 1039 Opioid Overdose Medication

## WSU

- \$10.8 million - Medical School Funding
- \$53,000K - HB 1039 Opioid Overdose Medication

# House Budget Proposal

---



**Workforce Investment Assessment:** Surcharge is imposed on select advanced computing businesses, computer software publishing/reproduction, conducting original investigation (modeling/simulation), securities and commodities agents/brokers, select information technology consulting, performing central banking functions,

# House Proposed Workforce Education Investment Account

## CWU

- \$1.9 million - Increase the number of certified K-12 teachers
- \$736,000k - Increase mental health counseling

## EWU

- \$2.6 million - Develop a computer engineering degree
- \$1.2 million - Develop a coordinated care network to maximize the connectivity of student support programs

## Evergreen

- \$670,000k - Hire additional psychology faculty
- \$580,000k - Increase student success by establishing a new student precollege immersion program and first-year experience program

## UW

- \$8.0 million - Increase degree production in the College of Engineering, UWS
- \$1.0 million - Maintain WA state academic redshirt program
- \$1.5 million - Add degree capacity and increase enrollments in STEM, UWB Biomedical Innovation Partnership Zone
- \$1.8 million - Establish BS programs in Mechanical and Civil Engineering, UWT

## WWU

- \$3.4 million - Increase access to STEM
- \$800,000k - Hire additional academic advisors and develop a first-year experience program

# Senate Operating Proposed Budget

CWU	EWU	Evergreen	UW	WSU	WWU
\$23.85 million - College Affordability Plan	\$21.16 million - College Affordability Plan	\$4.02 million - College Affordability Plan	\$82.8 million - College Affordability Plan	\$58.92 million - College Affordability Plan	\$32.92 million - College Affordability Plan
\$1.24 million - Employee compensation, academic program enhancements, student support services and other institutional priorities that maintain a quality academic experience for WA	\$1.04 million - Employee compensation, academic program enhancements, student support services and other institutional priorities that maintain a quality academic experience for WA	\$1.54 million - Employee compensation, academic program enhancements, student support services and other institutional priorities that maintain a quality academic experience for WA	\$25.9 million - Employee compensation, academic program enhancements, student support services and other institutional priorities that maintain a quality academic experience for WA	\$830,000k - Employee compensation, academic program enhancements, student support services and other institutional priorities that maintain a quality academic experience for WA	\$310,000k - Employee compensation, academic program enhancements, student support services and other institutional priorities that maintain a quality academic experience for WA
\$300,000k - Game On!  \$207,000k - SB 5428 Higher ed/Veteran	\$180,000k - SB 5428 Higher ed/Veteran	\$156,000k - SB 5428 Higher ed/Veteran	\$14 million - Expansion of degrees in the department of computer science/engineering Seattle campus  \$400,000k - Pre-law pipeline and social justice program at the UWT  \$255,000k - SB 5428 Higher ed/Veteran	\$3.9 million - Creation of software engineering and data analytic programs and development of an organic agriculture systems degree program at the university center in Everett  \$1.26 million - Creation of an electrical engineering program located in Bremerton  \$168,000k - SB 5428 Higher ed/Veteran	\$2.6 million - Develop a new program in marine, coastal and watershed sciences  \$1.4 million - Creation and implementation of an early childhood education degree program at the western on the peninsulas campus  \$1.16 million - Development of an organic agriculture systems degree program located at the university center in Everett  \$192,000k - SB 5428 Higher ed/Veteran

# Resources

---

## COP Sector Fact Book

[http://www.councilofpresidents.org/2019\\_01\\_COP\\_Sector\\_factbook.pdf](http://www.councilofpresidents.org/2019_01_COP_Sector_factbook.pdf)

## COP Fact Sheets and One-Pagers

[http://www.councilofpresidents.org/index-3\\_issues.html](http://www.councilofpresidents.org/index-3_issues.html)

## COP Bill Tracking

[http://www.councilofpresidents.org/billtracker\\_2019.htm](http://www.councilofpresidents.org/billtracker_2019.htm)

# CONTACTS

---

**Council of Presidents:** <http://www.councilofpresidents.org>

Central Washington University: [www.cwu.edu](http://www.cwu.edu)

Eastern Washington University: [www.ewu.edu](http://www.ewu.edu)

The Evergreen State College: [www.evergreen.edu](http://www.evergreen.edu)

University of Washington: [www.washington.edu](http://www.washington.edu)

Washington State University: [www.wsu.edu](http://www.wsu.edu)

Western Washington University: [www.wvu.edu](http://www.wvu.edu)

## **Council of Presidents Contact**

Julie Garver, Ph.D.

Director of Policy & Academic Affairs

Council of Presidents

360-292-4102

[garverj@cop.wsu.edu](mailto:garverj@cop.wsu.edu)



# WSAC update

ICRC Meeting – April 18, 2019

# WSAC's mission

We advance educational opportunities and attainment in Washington State.



- Policy and research
- Savings and financial aid programs
- Access and support programs
- Consumer protection

# More about WSAC

Attainment goals

Priorities

Updates

Adult Reengagement

# DTA/MRP reviews

## Complete

- Business

## Active

- Pre-Nursing

## Upcoming

- Computer Science
- Nursing

## In elimination process

- Engineering Technology

# Pre-Nursing DTA/MRP

## Add

5 cr. QSR to  
5 cr. Stats  
for total of  
10 cr. QSR

## Replace

5 cr.  
Sociology  
with 5 cr.  
non-psych  
social science  
w/diversity  
focus

## Keep

5 cr. Public  
Speaking

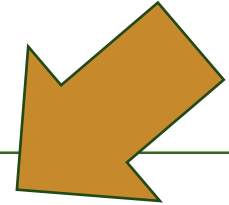
# Transfer report – what did it do?

## Analyzes

- Number of students completing MRPs
- Median credits to bachelor's degree for direct entry students vs. transfer students with MRP or AS-T

## Describes new transfer degrees

## Includes transfer improvements



# What did the report find?

---

Transfer degree awards are rising

---

Most MRPs and AS-Ts are effective

---

Transfers who majored in engineering took the most credits

---

Most transfers do not have a major-specific transfer degree

The number of statewide transfer degrees awarded in academic year 2017-18 increased by 15 percent since 2013-14





# Bachelor's degree earners

<b>Academic year</b>	<b>Total number of bachelor's degree earners - public four-year institutions</b>	<b>Total number of bachelor's degree earners - ICW institutions</b>
<b>2014-15</b>	21,839 (51% transfer)	4,118 (27% transfer)
<b>2015-16</b>	22,107 (53% transfer)	4,182 (29% transfer)

# Transfer degrees studied

AS-T 1



AS-T 1-related  
bachelor's  
degrees

Business  
DTA/MRP



Business  
bachelor's  
degrees

AS-T 2



AS-T 2-related  
bachelor's  
degrees

Engineering  
AS-T 2/MRP



Engineering  
bachelor's  
degrees

Biology  
DTA/MRP



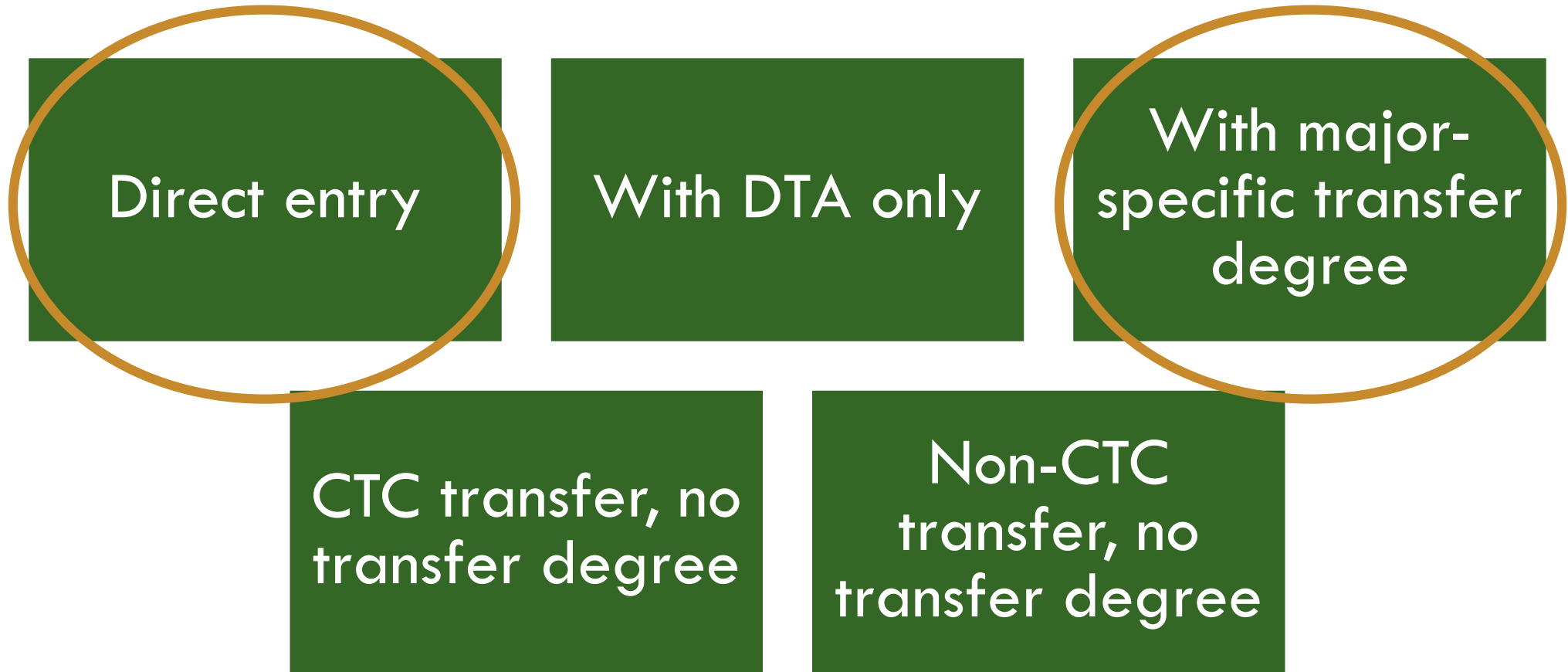
Biology  
bachelor's  
degrees

Pre-Nursing  
DTA/MRP



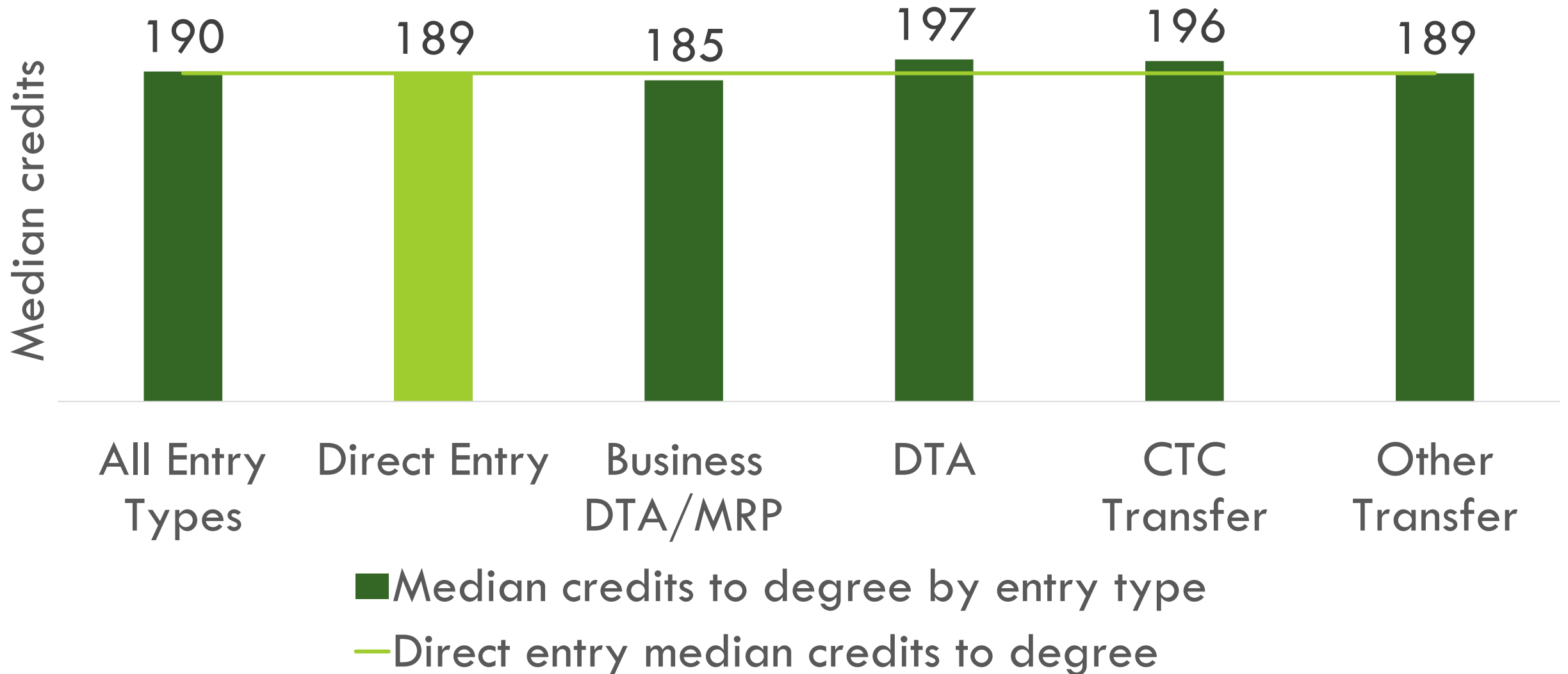
Pre-licensure  
BSN

# Entry types



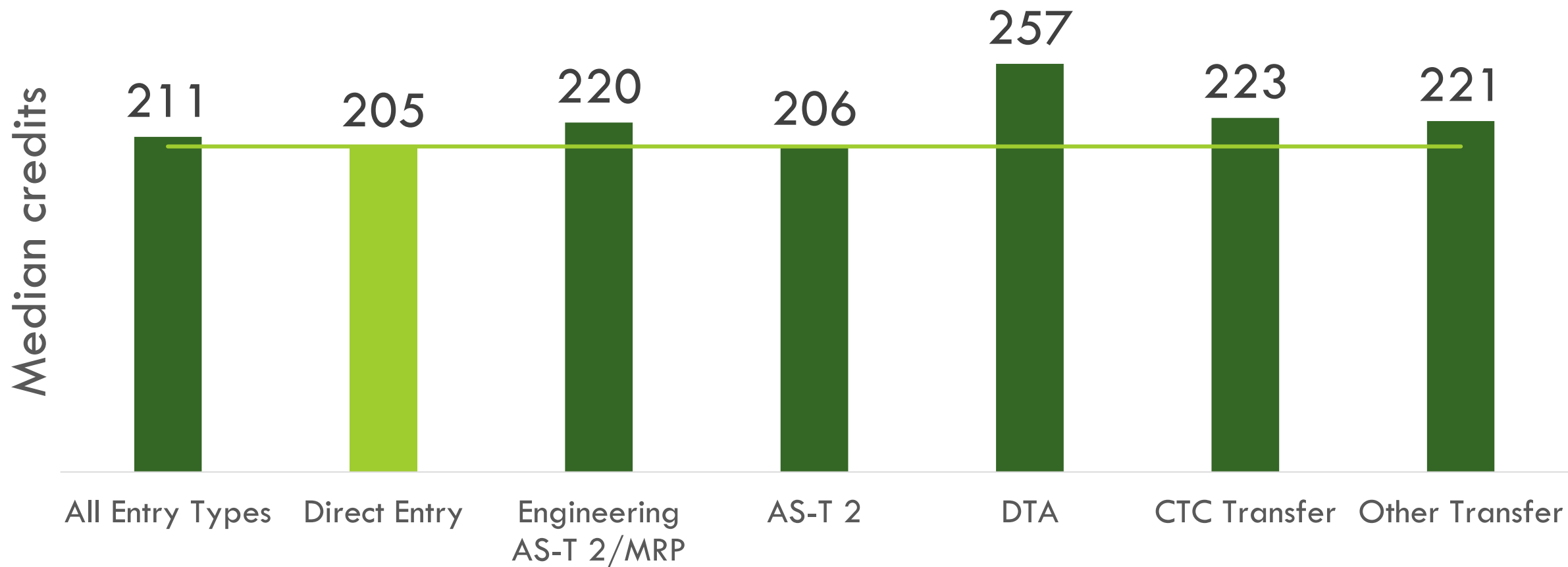
# Most MRPs and AS-Ts are efficient

2015-16 business bachelor's degrees



# Transfers who majored in engineering took the most credits

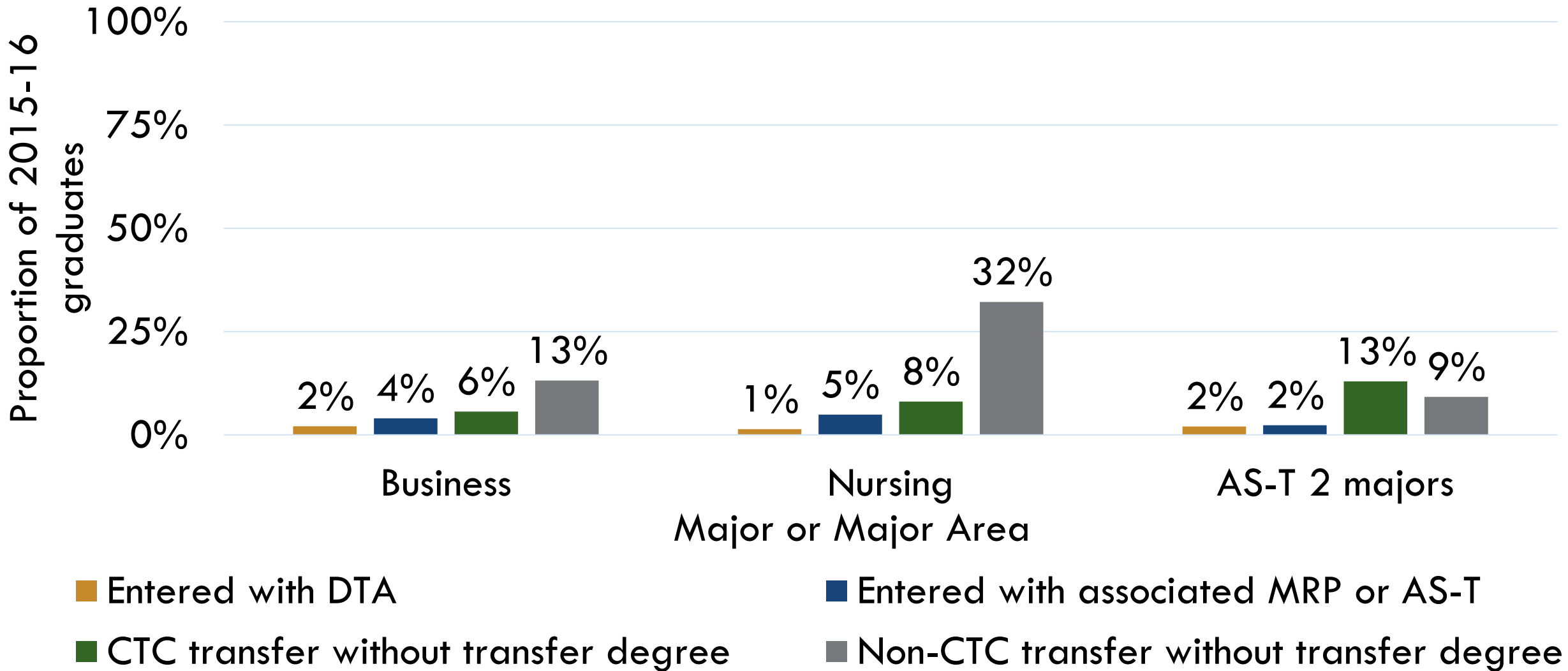
2015-16 engineering bachelor's degrees



■ Median credits to degree by entry type

— Direct entry median credits to degree

# For all majors, more transfer student ICW graduates entered without a transfer degree



# Future research recommendations

Equity lens

Other populations

- BAS earners
- Running Start
- Returning adults

Financial effect of excess credits

Forward look

# Your thoughts

Side 1:

- Is this information helpful?  
Why or why not?
- Would you value more research into how transfer degrees (and/or transfer in general) impacts persistence and credential attainment?

Side 2:

What questions do you have about WA transfer?





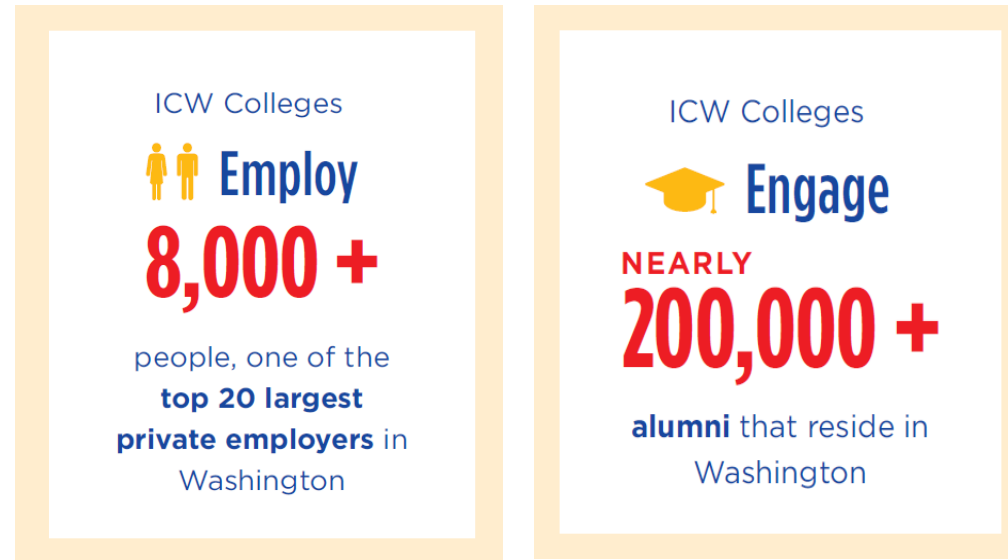
# Independent Colleges of Washington



Gonzaga University ★ Heritage University ★ Pacific Lutheran University ★ Saint Martin's University  
Seattle Pacific University ★ Seattle University ★ University of Puget Sound  
Walla Walla University ★ Whitman College ★ Whitworth University



# Powering Regional Economies

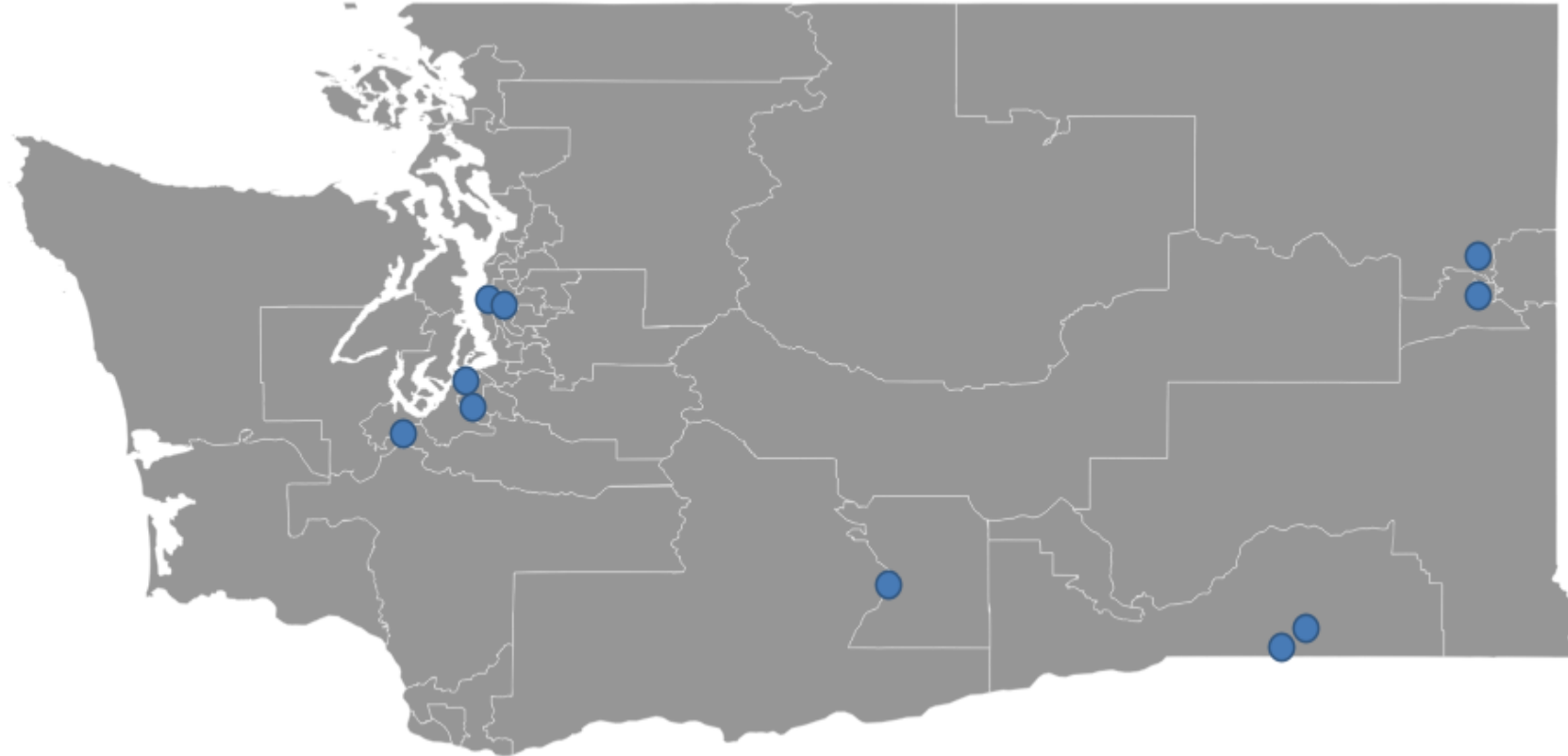


Independent Colleges of Washington colleges expend \$608M annually for payroll and benefits

Gonzaga University ★ Heritage University ★ Pacific Lutheran University ★ Saint Martin's University  
Seattle Pacific University ★ Seattle University ★ University of Puget Sound  
Walla Walla University ★ Whitman College ★ Whitworth University



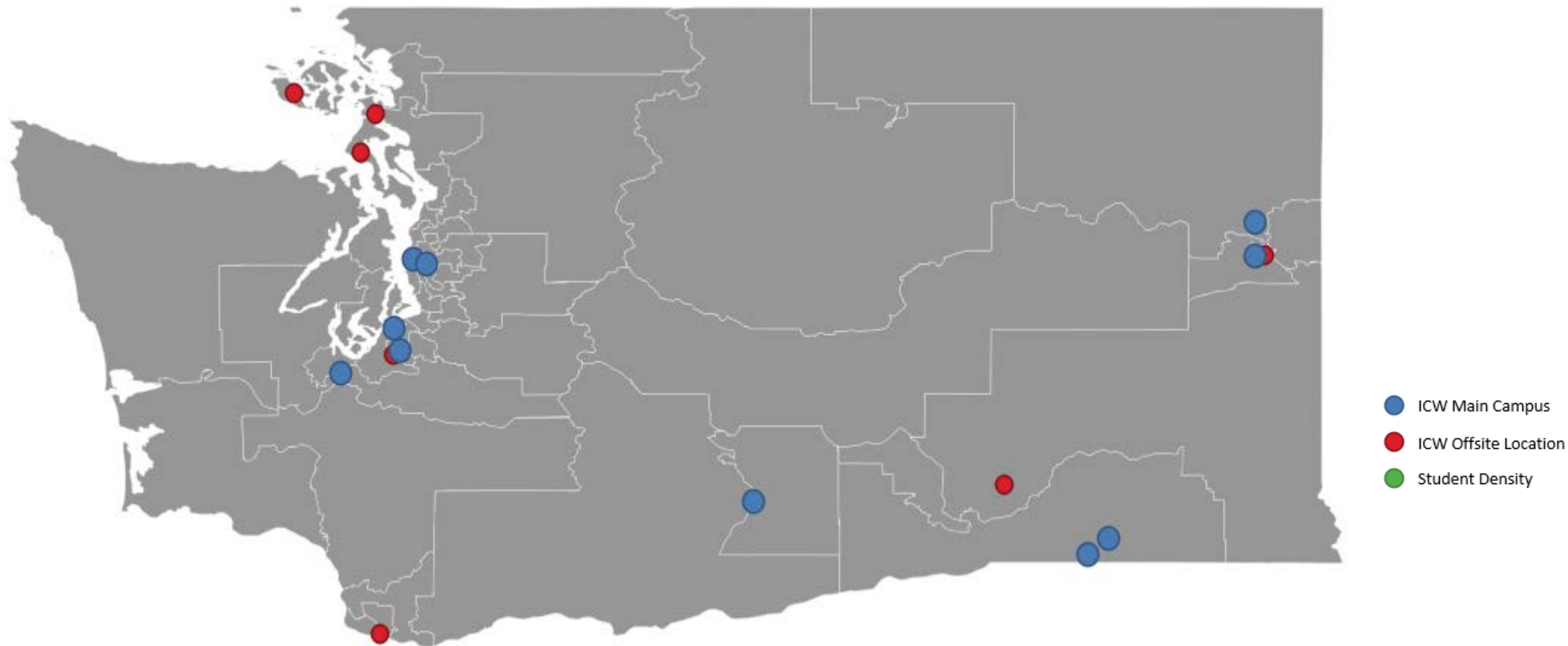
# Serving Washington: Students from All Counties



Gonzaga University ★ Heritage University ★ Pacific Lutheran University ★ Saint Martin's University  
Seattle Pacific University ★ Seattle University ★ University of Puget Sound  
Walla Walla University ★ Whitman College ★ Whitworth University



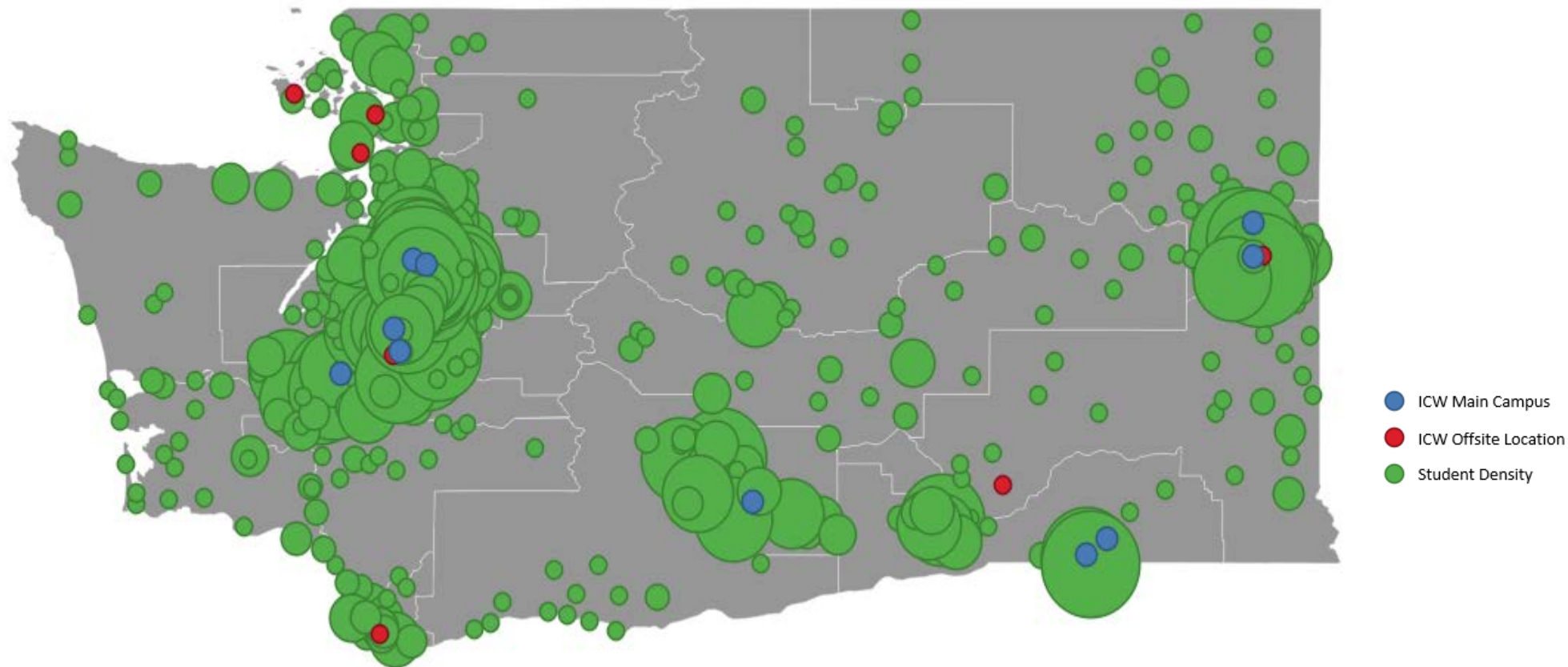
# Serving Washington: Students from All Counties



Gonzaga University ★ Heritage University ★ Pacific Lutheran University ★ Saint Martin's University  
Seattle Pacific University ★ Seattle University ★ University of Puget Sound  
Walla Walla University ★ Whitman College ★ Whitworth University



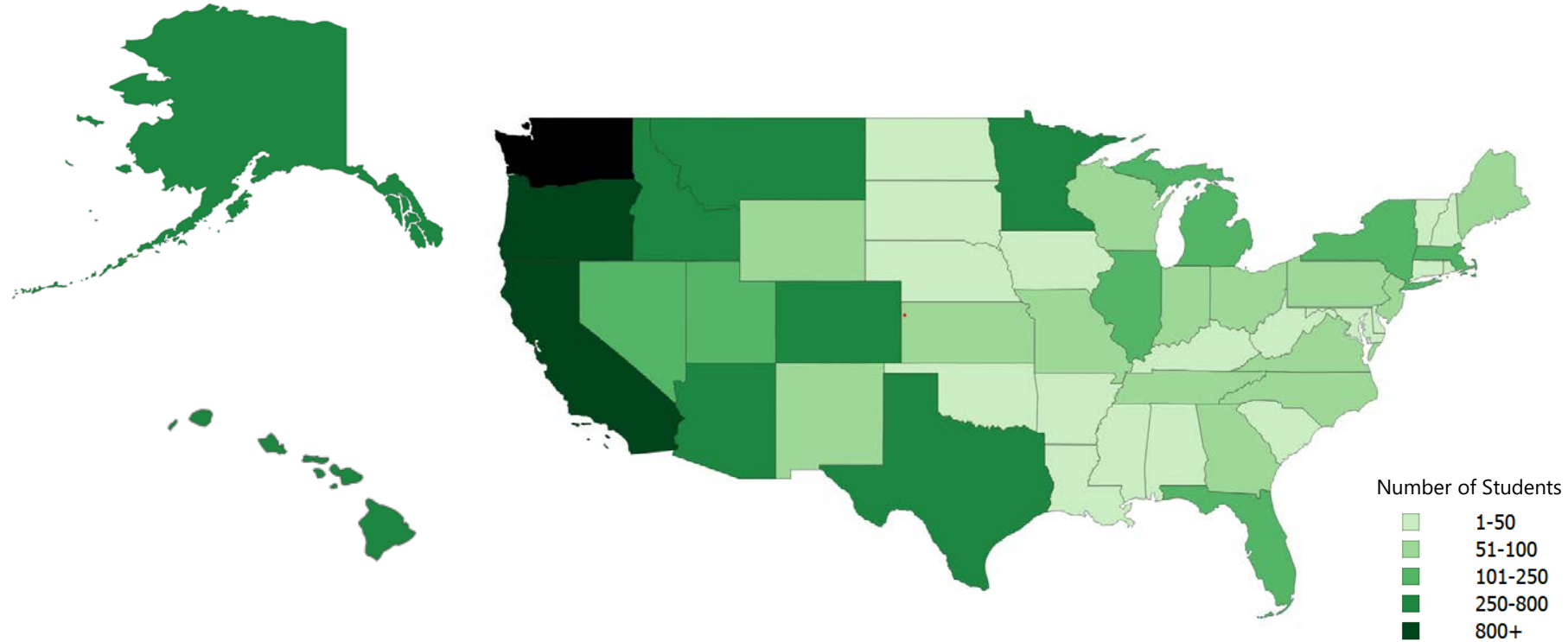
# Serving Washington: Students from All Counties



Gonzaga University ★ Heritage University ★ Pacific Lutheran University ★ Saint Martin's University  
Seattle Pacific University ★ Seattle University ★ University of Puget Sound  
Walla Walla University ★ Whitman College ★ Whitworth University



# Attracting Talent from Across the Nation



Gonzaga University ★ Heritage University ★ Pacific Lutheran University ★ Saint Martin's University  
Seattle Pacific University ★ Seattle University ★ University of Puget Sound  
Walla Walla University ★ Whitman College ★ Whitworth University



# Championing Diversity



Low-Income Students



Students Above Age 25



Students of Color



Transfer Students\*

\*of Juniors and Seniors (transferring 45+ credits)

Source: ICW analysis of most recent Student Unit Record Data submissions.



50 States



39 Washington Counties



90+ Countries

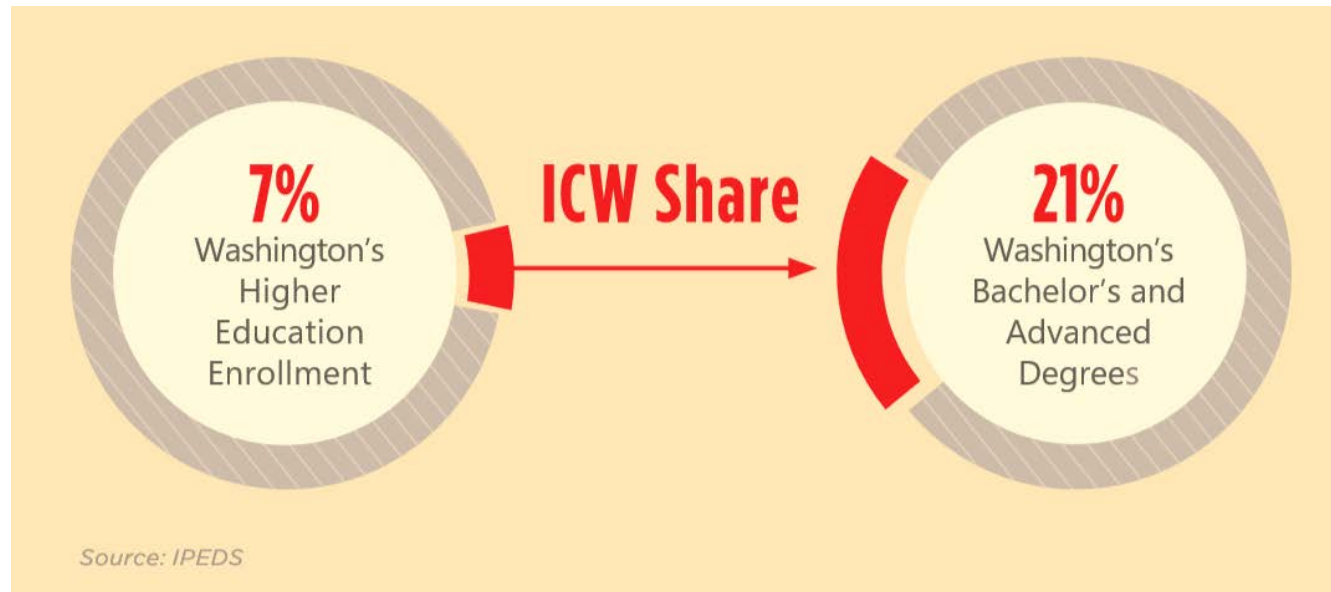


1200+ Veterans

Gonzaga University ★ Heritage University ★ Pacific Lutheran University ★ Saint Martin's University  
Seattle Pacific University ★ Seattle University ★ University of Puget Sound  
Walla Walla University ★ Whitman College ★ Whitworth University



# Completing Degrees



**Washington's not-for-profit colleges consistently rank among the top 5 states in terms of degree completion:**

RI	87.3%
CT	84.3%
MD	83.9%
MA	83.0%
<b>WA</b>	<b>82.8%</b>

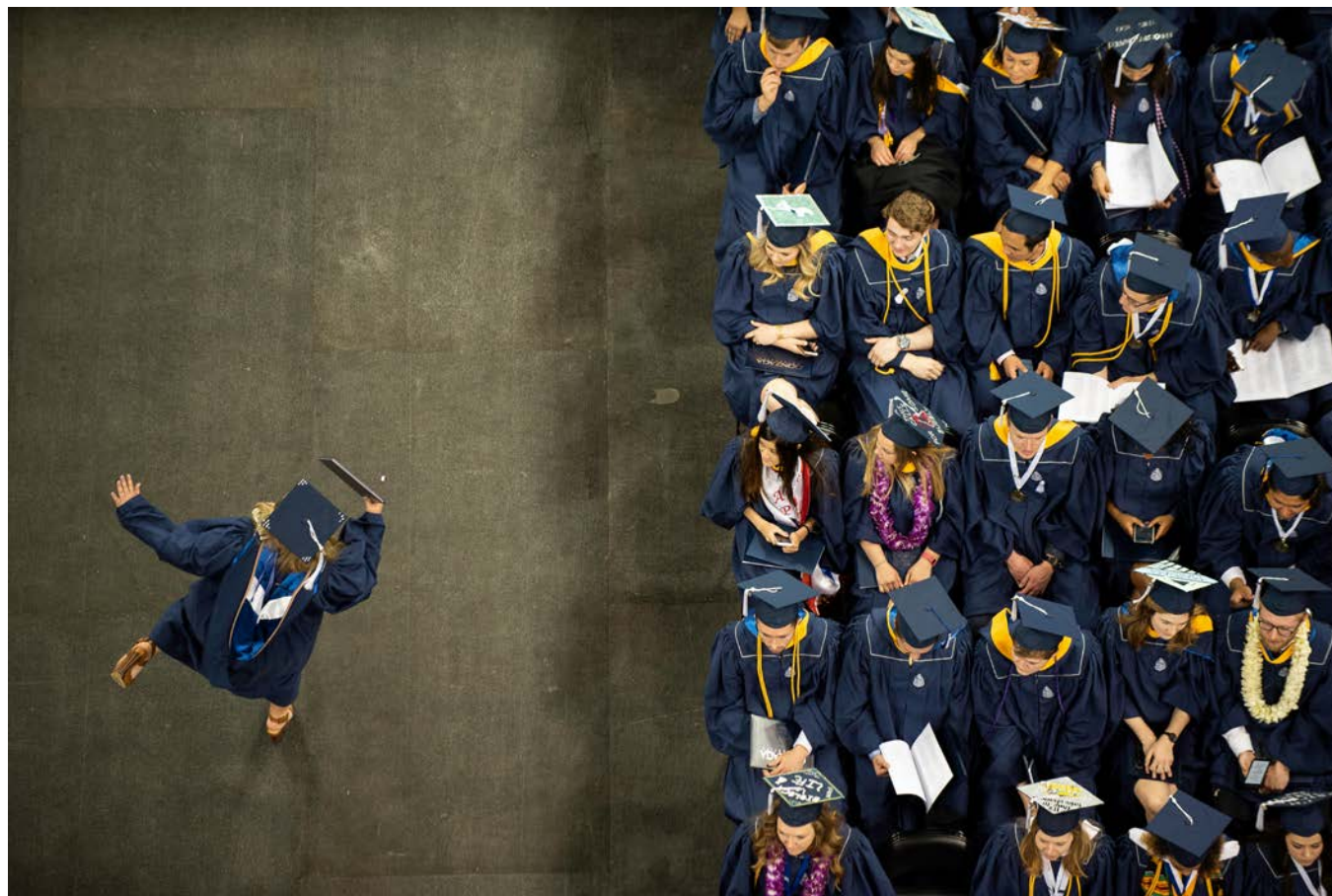
**Source:** National Student Clearinghouse Research Center, February 2018

Gonzaga University ★ Heritage University ★ Pacific Lutheran University ★ Saint Martin's University  
Seattle Pacific University ★ Seattle University ★ University of Puget Sound  
Walla Walla University ★ Whitman College ★ Whitworth University





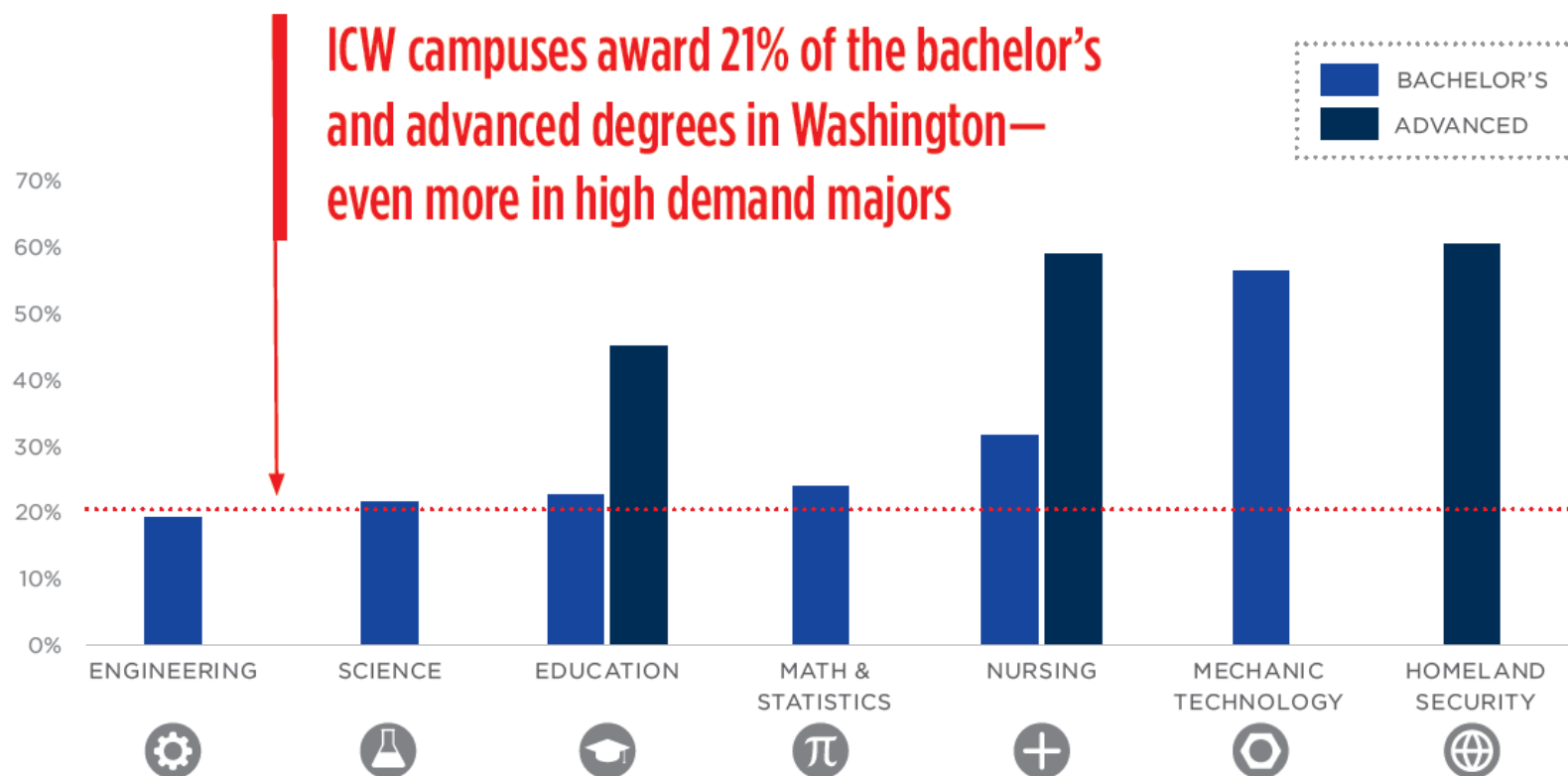
# Cultivating Talent



Gonzaga University ★ Heritage University ★ Pacific Lutheran University ★ Saint Martin's University  
Seattle Pacific University ★ Seattle University ★ University of Puget Sound  
Walla Walla University ★ Whitman College ★ Whitworth University



# Focusing on High-Demand Fields

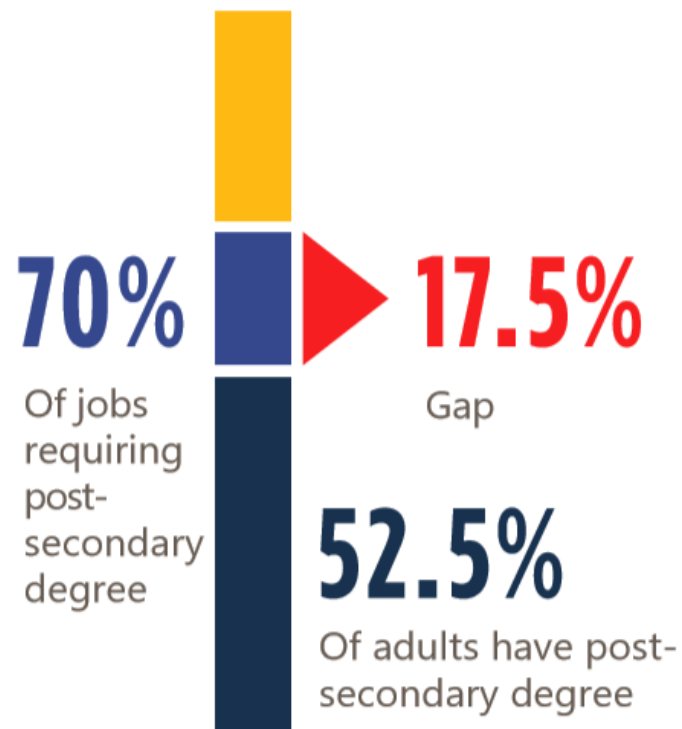


Source: U.S. Dept. of Education, National Center for Education Statistics (NCES)

Gonzaga University ★ Heritage University ★ Pacific Lutheran University ★ Saint Martin's University  
Seattle Pacific University ★ Seattle University ★ University of Puget Sound  
Walla Walla University ★ Whitman College ★ Whitworth University



# Shared Goal: Growing More Talent at Home



*Source: Roadmap Progress Report, Washington Student Achievement Council (WSAC)*

Gonzaga University ★ Heritage University ★ Pacific Lutheran University ★ Saint Martin's University  
Seattle Pacific University ★ Seattle University ★ University of Puget Sound  
Walla Walla University ★ Whitman College ★ Whitworth University



# A Public-Private Partnership Delivering Results



Gonzaga University ★ Heritage University ★ Pacific Lutheran University ★ Saint Martin's University  
Seattle Pacific University ★ Seattle University ★ University of Puget Sound  
Walla Walla University ★ Whitman College ★ Whitworth University



# WA Independent College Transfer Counselors

Member Campus	Transfer Counselor	Phone
Gonzaga University	Audrey Minton	800-322-2584   509-313-6579
Heritage University	Gabriel Pinon	509-865-0420
Pacific Lutheran University	Brandon Bruan	253-535-8742
Saint Martin's University	Caitlin Gordon	360-438-4594
Seattle Pacific University	Cathy Dominguez-Chinn	206-281-2021
Seattle University	Gwen Jackson	206-296-5811
University of Puget Sound	Torri Henson	253-879-3608
Walla Walla University	Gerry Larson	509-527-2776
Whitman College	Kris Surovjak	509-527-5176
Whitworth University	Ayaka Dohi	509-777-4626

Gonzaga University ★ Heritage University ★ Pacific Lutheran University ★ Saint Martin's University  
Seattle Pacific University ★ Seattle University ★ University of Puget Sound  
Walla Walla University ★ Whitman College ★ Whitworth University