

ICRC Executive Board

Fall 2024 Updates

April 2024

Issue Raised:

Current CTC transcripts do not identify the origin of Academic Credit for Prior Learning (ACPL) on official transcripts.

ICRC Action:

Statement presented to the State Board for Community & Technical Colleges

June 2024

Issue Raised:

The Washington Council has two websites:

Obsolete: <https://washingtoncouncil.org>

Current: <https://www.wa-council.org>

ICRC Action:

Proposed deactivation of the old site to the Washington Council.

June 2024 continued...

Issue Raised:

Washington Council bylaws (#3.8.5) denote 'one rep' from each institution; restricts appointment of ICRC members to individual campus presidents; and requires representation by OSPI/Secondary School reps appointed by the WA Assoc. of Secondary Principals.

ICRC Action:

ICRC proposed that the Washington Council investigate the following changes to Bylaws section 3.8.5:

- Update "one representative" to "one voting member and one secondary representative".
- Replacing "appointment by the president" with "chief academic officer or related designee"
- Promoting *optional* secondary school and OSPI representation at ICRC due to historical absence.

August 2024

Welcomed Laura Welch (WSU) to the Executive Board as the Member-at-Large beginning this fall!

Anticipated 2024-25 Work

- ICRC website and archive improvements - Dave
- ICRC Constitution Review & Refinement
 - Addressing unplanned board vacancies.
- Continued involvement in JTC work-groups regarding DTA revisions (2023)



STATE BOARD FOR COMMUNITY AND TECHNICAL COLLEGE

Fall Updates

Christine McMullin, Policy Associate, Student Services & K-12 Alignment

October 2024

2025 LEGISLATIVE PRIORITIES

- Operating Budget Requests
 - Fully funded, competitive compensation (\$183 million)
 - Support College Operations (\$90 million)
- Capital Budget Requests
 - Preventative and minor works projects



SECTOR UPDATES

- 2024 FAFSA/WAFSA processing – delayed access to student info, but system is ahead in processing and awarding for the 24-25 academic year
- System colleges are implementing opioid and fentanyl prevention education and awareness as a result of HB 2112
- Basic needs student census survey will be fielded October 28- November 22
- Ken Hang - New Policy Associate for Baccalaureate Programs in Transfer Education

FALL 2024 DUAL CREDIT WEBINAR

In collaboration with OSPI, SBCTC will offer a Dual Credit Webinar open to all for systemwide dual credit updates.

October 23 - 9:30-11am

<https://us02web.zoom.us/j/81497951056>

ACPL AND CTC TRANSCRIPTS

- Concern formally raised by ICRC in April 2024
- Lack of functionality in awarding ACPL credits through PeopleSoft
- Enhancement requests are a lengthy process and require a sponsor from the CTCs
 - Will need to be reviewed by ctcLink College Collaborations Group for feasibility

QUESTIONS?

Christine McMullin

Policy Associate, Student Services & K-12 Alignment

cmcmullin@sbctc.edu

Val Sundby

Director of Transfer Education

vsundby@sbctc.edu



Intercollegiate Relations Commission Update from Independent Colleges of Washington

October 10-11, 2024
info@icwashington.org



ICW Priorities

- Advocate for students and campuses legislatively
- Advance visibility of member campuses across the state
- Provide financial support for students – distributed ~ \$900,000 in scholarships in 2023-24
- Pursue private funding to support community engagements and partnerships
- Support member campuses through Communities of Practice



INDEPENDENT
COLLEGES OF
WASHINGTON



**ICW campuses
are close
to students
across the
state**



More than **8,000**
students graduate
from ICW campuses
annually

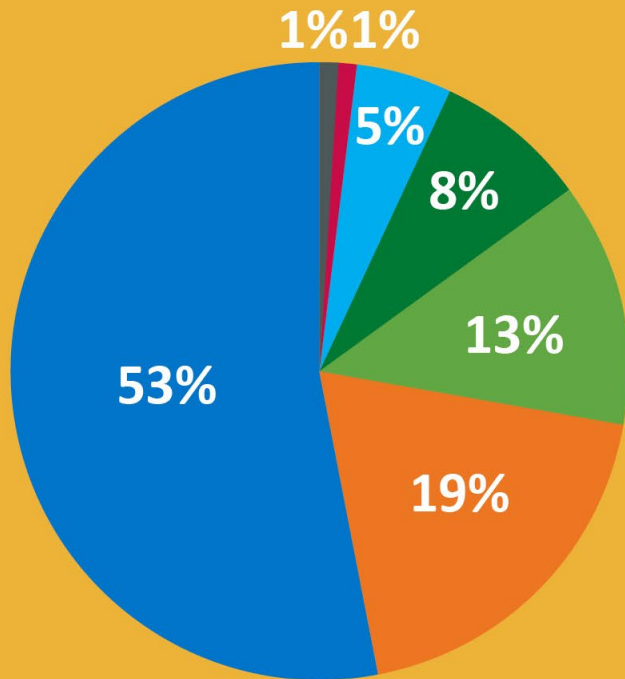


CULTIVATING TALENT

one in five

of WA four-year+ degrees
are conferred at ICW
colleges in Washington

~50% ARE STUDENTS OF COLOR



UNDERGRADUATE ENROLLMENT BY RACE/ETHNICITY

- Native American/Alaska Native 1%
- Native Hawaiian/Pacific Islander 1%
- Black/African American 5%
- Two or More Races/Ethnicities 8%
- Asian 13%
- Latinx/Hispanic 19%
- White 53%

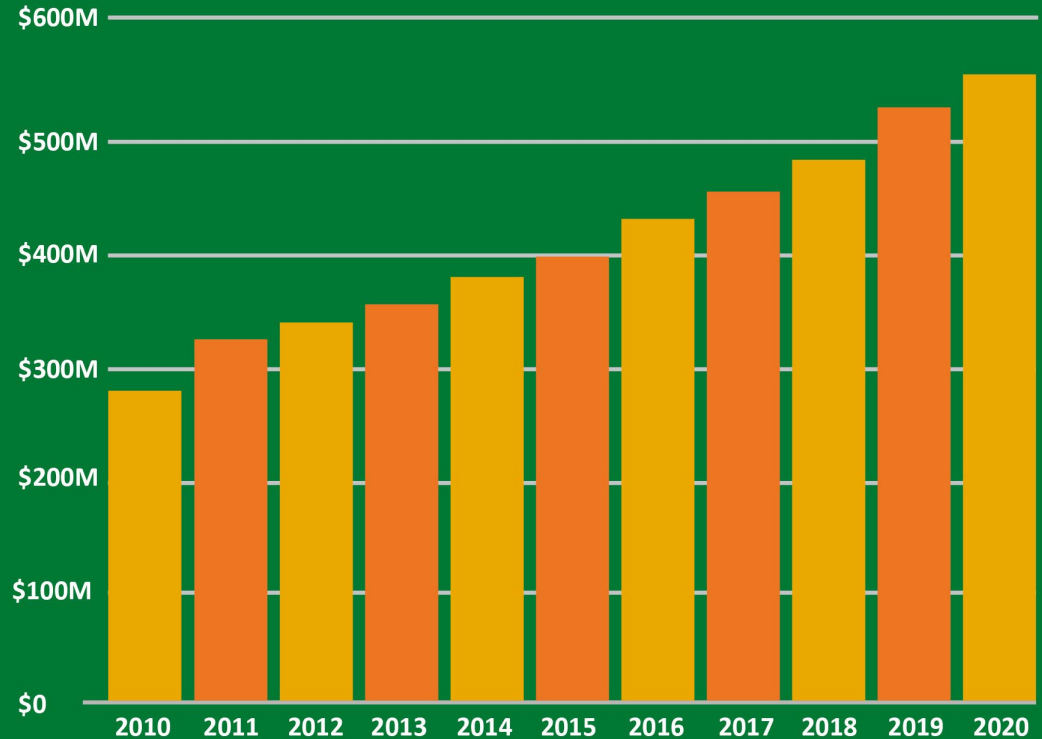


One in three
juniors and seniors
have transferred
credits

Delivering Value

Nine in 10 of our undergraduates receive financial aid from their campus or other sources

Between 2010 and 2020, institutional aid from ICW member campuses has nearly doubled





INDEPENDENT
COLLEGES OF
WASHINGTON

Completing Degrees

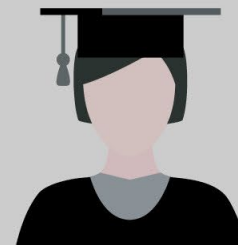
ICW member campuses
have strong completion
rates

8,000+ students
graduate with
bachelor's and
advanced degrees
from ICW member
campuses each year



83%

Independent
college
average
(WA)



62%

National
average,
all sectors

Participation in Statewide Agreements

Member Campus	AA/AS DTA	AS-T Track 1	AS-T Track 2	Biology	Busi- ness	Comp. Science	Engineer- ing	LPN-BSN	RN-BSN	Pre- Nursing	Reverse Transfer
Gonzaga University	Y		Y		Y	Y	Y				
Heritage University	Y	Y	Y		Y	Y		Y			
Pacific Lutheran University	Y	Y			Y	Y				Y	Y
Saint Martin's University	Y	Y	Y	Y	Y	Y	Y	Y	Y	Y	Y
Seattle Pacific University	Y	Y	Y	Y	Y	Y	Y			Y	Y
Seattle University	Y	Y	Y	Y	Y	Y	Y			Y	Y
University of Puget Sound	Y										
Whitman College	Y										
Whitworth University	Y	Y		Y	Y	Y					

Supporting Transfer Students

<https://icwashington.org/transfers>



The screenshot shows the website's navigation menu with links for Home, Programs and Scholarships, Policy Priorities, Stories and Resources, Donate, Partnerships, and ABC. The main banner features a photograph of a university building with the text "SUPPORTING STUDENTS IN TRANSFER" overlaid. Below the banner are links for "About Transfer at ICW", "What Our Students Say", "Transfer Counselor Directory", and "Transfer Agreements".

Transfer to ICW Member Campuses

Focus on students who transfer

Washington is one of the few states in the nation with long-standing, coordinated transfer efforts that bring together higher education partners to support students who want to transfer from two-year community colleges to four-year colleges and universities.

Most community and technical college students (68%) intend to transfer and attain a bachelor's degree. ICW campuses welcome students who transfer, students such as Brooke (see video), who transferred to her "dream school" from a Washington community college.

Brooke Perez, Gonzaga University
Independent Colleges of WA

BROOKE PEREZ
MAY 22 17

Supporting Student Success



Diversity, equity, inclusion, and justice

As communities across Washington continue to evolve, Independent Colleges of Washington's member institutions are committed to creating and maintaining a vibrant and welcoming community for students, staff, and faculty.



Basic needs

Various programs at our member campuses offer help to students in need, such as housing, food insecurity, and financial assistance.



Behavioral health

Our campuses provide a number of resources aimed at improving students' well-being, mental health, and resiliency.



Academic tutoring

In support of student success, our institutions make a variety of academic services available to help students achieve their academic goals.

Engagement Initiatives

Strengthening Transfer Pathways



WA Student Engagement Networks





Questions?

If you have any questions, please contact:

Sheila Steiner, Ph.D.

Senior Director, Policy & Community Engagement
Independent Colleges of Washington

Email: Sheila@icwashington.org

206-623-4494





INDEPENDENT
COLLEGES OF
WASHINGTON

WASHINGTON STATE
Council of
Presidents

ICRC Fall Meeting



October 2024



We Want Washington CTC Students!

- We are excited to welcome Washington transfer students to any one of our public four-year universities! **We want you!**
- **Your students are our students.** We are committed to serve all students with a focus on identifying and reducing gaps among student populations.
- Washington's public baccalaureate institutions **welcome Washington students** who are interested in earning a bachelor's degree, whether they have already considered it, are currently contemplating it, or have yet to explore the possibilities. Our institutions provide **a place for every student** to pursue their dreams, obtain additional career credentials, and follow their passions.



A Public Baccalaureate Institution Near You

- Two **research** institutions, three **comprehensive** institutions and the state's public **liberal arts** college.
- Governed by a Board of Trustees or Board of Regents.
- Located in **all 39 counties** in Washington.
- Four campuses in **Bothell, Tacoma, Tri-Cities** and **Vancouver**.
- Multi-institutional partnerships in **Spokane** and **Everett**.
- University centers and academic partnerships with **21 community and technical colleges** across the state.

Delivering Access to In-Demand, Affordable Degrees through Completion

- Sector average admit rate is **74%** - transfer students
- **Nearly half** of transfer students identify as non-White
- **42%** of transfer students in the public four-year sector received a Washington College Grant
- Washington public four-year institutions rank **2nd in the nation** for Pell Grant recipients
- **State's largest producer** of bachelor's degrees
- **Rank 2nd highest** in Western State Region for Graduate Rates and above the national average
- Average time to degree is **2.67 years** for transfer students

Supporting Transfer Students

Creating a welcoming community of belonging:

- Dedicated transfer advising
- Transfer advising days
- Transfer Centers

Wraparound programs and services to support the whole student:

- Ethnic and Student Inclusion Student Centers and Institutional Offices
- Food Pantries
- Student Wellness
- Childcare
- Accessibility
- Academic Learning Supports



Transfer Works in Washington

- Transfer students who enroll in a Washington public, four-year institution are successful overall and across key historically underrepresented student populations.
- Once at a baccalaureate institution, the median credits earned and senior GPAs for transfer students are **similar** across majors.
- Time to degree for transfer students is **similar** to students who enroll directly from high school.
- Washington’s public baccalaureate institutions rank **2nd in the nation** for the proportion of community and technical college students who finish bachelor’s degrees after transferring to a four-year college or university.

	Entering Fall Cohort 2015				
Ranking	All	Low-Income	Black	Hispanic	25 yrs. or Older
CC Transfer In Retention Rate	5 th	3 rd	4 th	5 th	4 th
CC Transfer Bachelor’s Completion Rate (in 4 years)	2 nd	2 nd	1 st	3 rd	2 nd

Data Source and Definitions

- Transfer-in retention rate. The percentage of students retained at the four-year institution into the second year after transferring in.
- Transfer-in bachelor’s completion rate. The percentage of transfer students who complete a bachelor’s degree at the receiving four-year institutions within four years after transferring in.
- <https://ccrc.tc.columbia.edu/tracking-transfer-state-outcomes.html>
- <https://ccrc.tc.columbia.edu/tracking-transfer-state-outcomes.html>
- <https://nscresearchcenter.org/tracking-transfer/>

Transfer Beyond the DTA and AS-T

Institutional Articulation Agreements

- Institutions are engaged in **hundreds of articulation agreements** with colleges and universities in Washington and out-of-state.

Transfer of Professional Technical Credit

- Earn a DTA and **transfer up to 15 professional technical credits** toward a BS or BA.
- **Earn a technical associate degree** (AAS, ATA, AAT or AAS-T) and transfer to earn a bachelor's degree – Upside Down Degree.
- Earn a technical associate degree and **transfer to earn a BAS degree.**
- **Pathways from the skilled trades** to bachelor's degrees.
- **Academic Credit through Prior Learning.**

Transfer Data

- Collectively identify student and institutional **transfer data** to inform transfer policy and degree development.



Recommendations for Successful Transfer

- Communicate with advisors **early and often**.
- **Apply early**. Advisors are here to guide students on next steps.
- Ask about **special transfer programs or supports at the intended transfer institution** while enrolled at the community college.
- Students are **strongly encouraged** to complete their degree prior to transferring.
- **Ask** questions and **seek** clarity.

Updates

Admissions

- Fall 2025 admissions open for most Washington public universities

Transfer

- Presented at the WCHSCR Transfer Advisor Workshop
- Apprenticeship and Higher Education Work Group

Dual Credit

- [CiHS Equivalencies](#)
- CIHS Program Review
- [SAO Audit Released](#)

New Degrees

New public four-year university degrees since the winter 2024 ICRC meeting

Eastern Washington University

- BS Interdisciplinary Studies: Integrated Behavioral Health
- MS Professional Cybersecurity
- MS Cyber Defense

Western Washington University

- BS Economics
- BS Economics/Mathematics
- BAE Elementary Education
- BA English — Film and Media Studies Emphasis
- BA Ethnic Studies
- BA Latin American Studies with Spanish Concentration
- BA Latin American Studies with History Concentration
- BAE Multilingual Special Education
- BA Sociology for Professionals - WWU Poulsbo
- MSN Nursing Education
- MSN Nursing Leadership & Administration
- MA Urban Planning and Environmental Sustainability

New Degrees

New public four-year university degrees since the winter 2024 ICRC meeting

University of Washington Seattle

- Master of Engineering Leadership and Systems Innovation
- MS Artificial Intelligence and Machine Learning for Engineering

Washington State University

- Master of Energy Conscious Construction – Global Campus
- BS Public Health – Pullman, Spokane, Vancouver
- MS Veterinary Anatomic – Pullman

2025 Legislative Session Priorities

- Focus on **building a future of opportunity and prosperity** through higher education.
- Establish a dynamic public higher education ecosystem **where every student aspiring to earn a bachelor's degree can achieve their goal.**
- Call for a **renewed commitment** to higher education, recognizing its essential role in our economy.
- We are at **a critical juncture.** To meet the state's attainment goals and address workforce gaps, we need to credential 200,000 more students. We must convince students and families of the substantial return on investment in higher education.

Investment in Washington's public baccalaureate institutions to invest in Washington students

Promise and expand Washington's commitment to affordable world-class higher education

Revolutionize higher education key transitions to and from university

Contact Information

Julie Garver

Director of Policy and Academic Affairs
Council of Presidents
jgarver@councilofpresidents.org

 councilofpresidents.org

 [@CouncilofPresWA](https://twitter.com/CouncilofPresWA)

 [Council of Presidents](https://www.linkedin.com/company/councilofpresidents)



Washington Student Achievement Council

ICRC Fall 2024

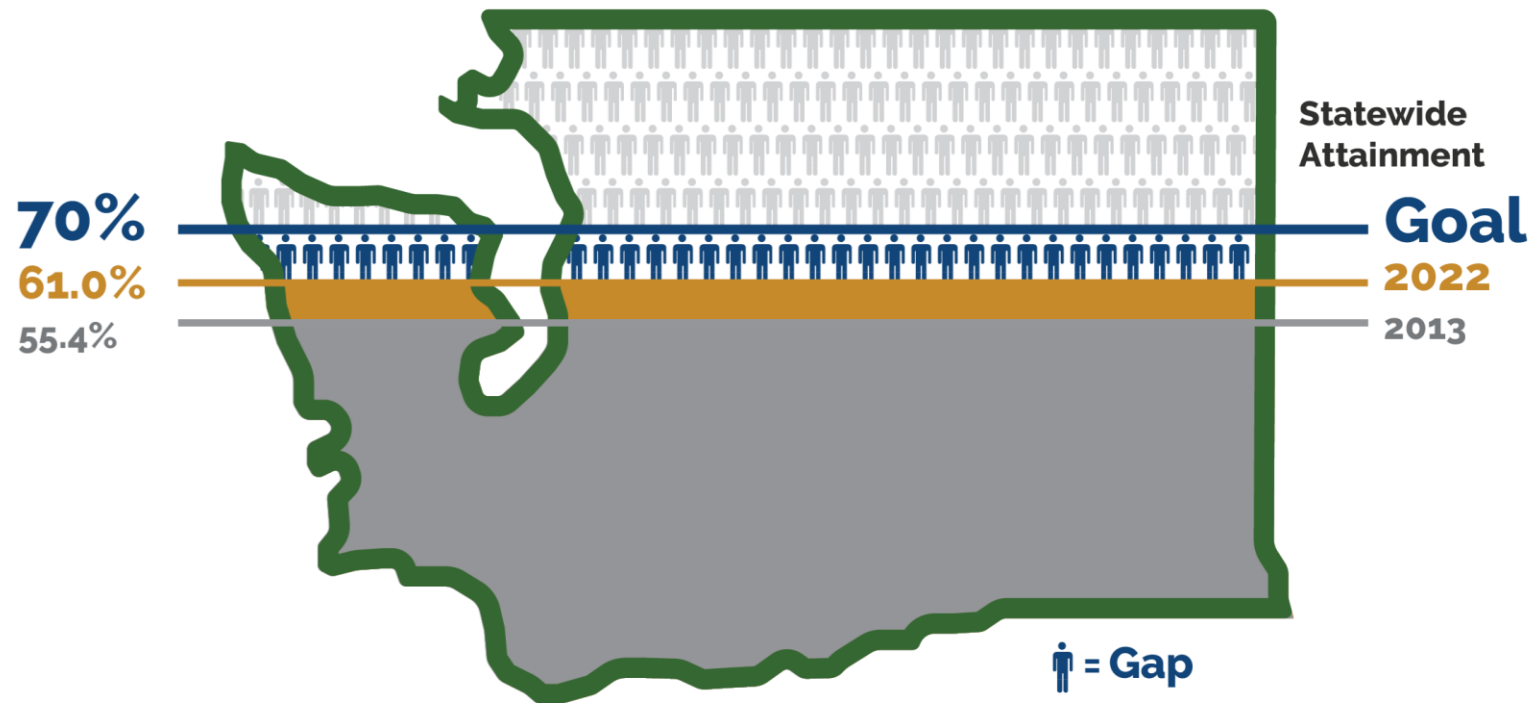
Abby Chien she/her
Associate Director, Strategy & Partnerships





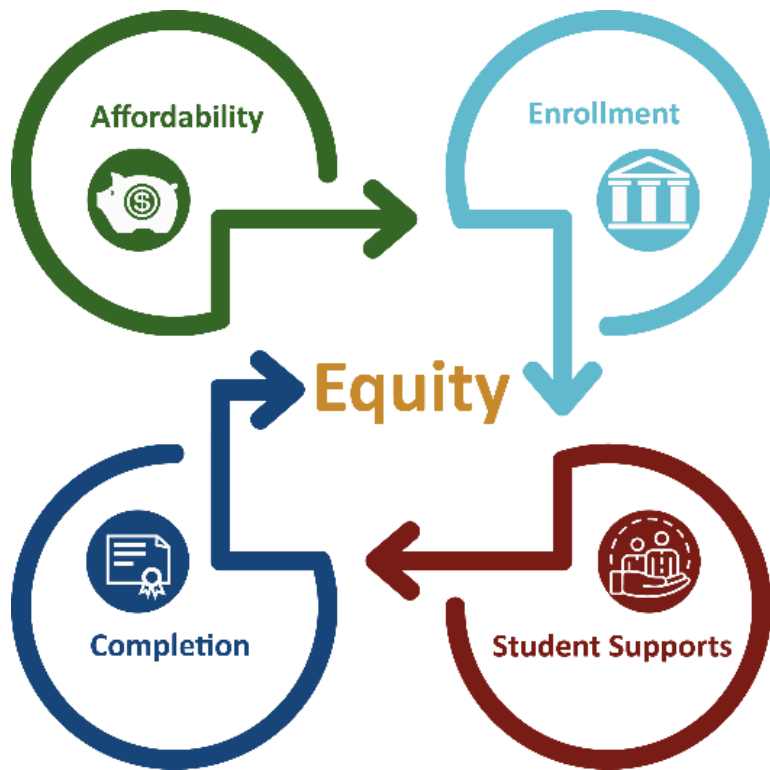
WSAC's Strategic Framework

If we build an **affordable** and **supportive** educational environment, more Washingtonians will **enroll** in programs and **complete** credentials.





Strategic Action Framework



Enrollment: How do students get to postsecondary?

Completion: How do students *get through* postsecondary?

Student Supports: Do students have the wraparound support to survive and thrive?

Affordability: Can students cover the cost of their education?

Equity: An imperative to respond to societally-reinforced inequities; serve those furthest from educational attainment, close institutional gaps, and understand how identity and environmental factors impact credential attainment.



College Outreach and Initiatives Updates

- Keep an eye out to sign up for training (or watch previous training!) at [Aim Higher Washington](#)
- [FAFSA Updates & Resources](#) for 25-26; updated regularly
- Padlet: [12th Year Campaign Key to Success Financial Aid Resources](#) ([padlet.com](#))
- We'll be starting to text new cohorts of [OtterBot](#) students and families next week



Universal Transfer Explorer Update

Project Goal: Increase information about transferring, especially credit transfer, through the creation of a public-facing mobile-first database with participating institutions.

- Phase One: WSU-E & Shoreline with institutions from South Carolina and Connecticut – live tool will launch by 2025.
- Phase Two: WSU (system) & CBC confirmed; looking for additional CTC interest



Reports of Interest

- Automating Access to Increase Enrollment: Emerging Strategies to Increase Postsecondary Enrollment for Washington Students ([2024](#))
- Research Digest: The pandemic's impact on credential attainment ([2024 Digest](#) | [PDF](#))

<https://wsac.wa.gov/reports-and-publications#feature-publication>



2025 Legislative and Budget Proposals

[PDF reference](#)



Maintain Affordability for Students

1. Make the 65% Median Family Income (MFI) and Bridge Grants permanent features of the WA Grant
2. Fully fund the Passport Program and guarantee WA Grant for former foster and unaccompanied homeless youth.
3. Bolster capacity for current and future Regional Challenge Grant partnerships
4. Continue text-based outreach via OtterBot for financial aid and pathway navigation
5. Foster partnerships between employers and institutions to award academic credit for prior learning (ACPL)



Increase Postsecondary Enrollment and Completion

1. Bolster capacity for current and future Regional Challenge Grant partnerships
2. Continue text-based outreach via OtterBot for financial aid and pathway navigation
3. Foster partnerships between employers and institutions to award academic credit for prior learning (ACPL)



Postsecondary Students Basic Needs

1. Include tribal college and support affordable housing planning within Supporting Students Experiencing Homelessness (SSEH) program
2. Evaluate low-cost meal plan pilot and assess student access to affordable childcare