



2021 ICRC FALL MEETING SBCTC REPORT

Jamilyn Penn, Director, Transfer Education - SBCTC

October 14, 2021

Virtual



HAPPY FALL IN THE PACIFIC NORTHWEST!



BACHELOR OF SCIENCE IN COMPUTER SCIENCE

- The first round of community and technical colleges are preparing applications for submission to the State Board to offer Bachelor of Science in Computer Science degree
- Colleges have the option of submitting applications as either independently or as a consortium
- State Board for Community and Technical College (SBCTC) staff will continue to support colleges and to provide technical assistance where needed



UNDERGRADUATE RESEARCH

- The National Science Foundation (NSF) awarded Bellevue College (the lead institution) \$300,000 for a new project entitled Institutionalizing Undergraduate Research to Advance Systemic Change and Equity at Washington Community Colleges.
- The funding will be used system-wide to improve undergraduate STEM education. The grant award period is October 1, 2021 - September 30, 2023.



ANTI-RACIST WRITING ASSESSMENT ECOLOGIES (AWAE)

- *Anti-Racist Writing Assessment Ecologies (AWAE)* The Anti-Racist Writing Assessment Ecologies (AWAE) project, generously funded by College Spark Washington, continues with initial cohort of 7 colleges and 28 faculty through December, 2021. Each multi-racial college team has created a map of their current assessment ecology, identified an antiracist problem, and designed a plan to change their ecology to be more antiracist. Over fall quarter, each team will implement its plan. We hope to continue the work with additional philanthropic support.
- *Anti-Racist English 101 Curriculum review (ARC)*, funded by the legislature, will begin Winter quarter 2022. Our leadership team will announce and accept applications from interested faculty this fall: we have created space for every college to have at least two faculty participate. The focus of this work will be on supporting faculty to implement labor-based grading with support from Asao Inoue, the leading scholar in anti-racist writing assessment praxis.



GUIDED PATHWAYS-LEARNING COMMUNITIES

- *Ethnographies of Work* - a cohort of 5 colleges are engaged in pilot planning to integrate ethnographies of work models into their curriculum and classrooms. This is designed to support the structured exploratory experiences of students at those colleges.
- *Co-Requisite Mathematics* - This learning community continues to work on the implementation and scaling of co-requisite math models. Winter, 2022 additional colleges will be invited to participate.
- *Placement Practices* - This learning community will expand and build on the work from the GP Early Adopter Cohort colleges launched in 2020-21.



GUIDED PATHWAYS-IDEAL STUDENT FELLOWSHIP

Community and Technical College Student Training and Engagement:

- Cohort 1 - SSC hired 4 Senior fellows from Cohort 1 to support Cohort 2 and to draft a plan for project implementation at the college level
- Cohort 2 - Presented their projects and recommendations
- Cohort 3 - Applications will be opening this fall for a winter quarter fellowship launch- more to come!
- Fellowship Evaluation - CCRI will be conducting a qualitative evaluation of the GP IDEAL Fellowship focused on individual and institutional change

LPN-TO-BSN DIRECT TRANSFER AGREEMENT (DTA)

- The LPN-to-BSN planning committee met for over a year to determine a more equitable and streamlined pathway for students to move from the Licensed Practical Nursing degree to the Bachelor of Nursing degree.
- Drafts of two plans or pathways have been developed, each pathway aligns with premise of Guided Pathways-equitable access for all students, including historically marginalized students and streamlined curriculum and credit hours to lessen both the time to earn the advanced degree and the financial burden to do so.
- Councils and commissions in the community and technical college sector will have an opportunity to provide feedback; four-year public and private colleges will also have an opportunity to review and provide feedback to the planning committee.
- Nursing Commission lead personnel participated in work with the workgroup is very excited about what has been proposed

RUNNING START

- House Bill 2864 (2020). The Running Start Summer pilot launched summer 2021 at Yakima Valley College, Skagit Valley College, and South Puget Sound Community College.
- OSPI, in collaboration with SBCTC will be collecting data on the effectiveness of the pilot and submitting a report to the legislature this November.
- The pilot was limited to five credits per summer session for incoming 11th and 12th grade students and seniors who were one class short of receiving their AA.



RUNNING START AND STUDENTS OF COLOR

- SBCTC has developed a statewide communication plan to reach out to BIPOC students regarding information about Running Start in hopes to improve overall participation.
- A pilot began in mid-June reaching out to communities and schools districts in the service areas of Renton Technical College, Highline College, Green River College, and Columbia Basin College.
- Outreach has been focused on middle school and high school students, families, and counselors.

ALLIED HEALTH & HEALTH SCIENCES

Workforce Education staff continues providing guidance to new and ongoing initiatives in allied health and health sciences, including:

- LPN Apprenticeships: NA-C to LPN pathway development, as provided by the 2021 Legislature, led by the Washington Dept. of Health (DOH).
- Behavioral Health and SUDP workforce development, as facilitated through the Behavioral Health Work Group, staffed by the Workforce Education and Training Coordinating Board (WTB).
- Long-Term Care workforce development, as facilitated by a number of agencies, including DSHS-ALTSA, DOH, and WTB.
- Dental hygiene and assistant workforce expansion, as initiated by the Washington State Dental Association and Delta Dental of Washington.



MENTAL HEALTH COUNSELING & SERVICES PILOT PROGRAM

- Senate Bill 5194 (2021 Legislative Session) created and funded a pilot program to serve the mental health needs of community and technical college students.
- After a thorough evaluation of applications from 25 of our colleges, a selection committee chose four colleges for the pilot program that begins this fall
- Colleges: Grays Harbor College, Lake Washington Institute of Technology, North Seattle College, and Wenatchee Valley College
- The pilot programs will implement one or more mental health counseling best practices while increasing both on-campus mental health counseling and partnerships with community providers



FOCUS ON ACCESSIBILITY

- Monica Olsson, new Policy Associate-Accessible IT Coordinator at SBCTC
- [New “Accessibility Center” webpage](#) on SBCTC website. This space will include important updates, resources, events and training opportunities.
- [Upcoming webinar: “How to Read a VPAT”](#) with Terrill Thompson, manager of UW IT Accessibility Team. Event is intended for procurement and IT Accessibility staff.

QUESTIONS

Please let me know if you have questions.

Contact Info.:

jpenn@sbctc.edu



© 2021 Independent Colleges of Washington

1



Who We Are

Independent Colleges of Washington is an association of 10 private, not-for-profit universities that call the state of Washington home. These campuses offer students **high-quality, academically rigorous learning** grounded in the **liberal arts**, with an emphasis on **critical thinking, lifelong learning, ethics, leadership, and community service**. With students from each of Washington's 39 counties and more than 135 years of history, member campuses award one in five of the baccalaureate and graduate degrees earned in the state of Washington.

Gonzaga University ▪ Heritage University ▪ Pacific Lutheran University ▪ Saint Martin's University ▪ Seattle Pacific University
Seattle University ▪ University of Puget Sound ▪ Walla Walla University ▪ Whitman College ▪ Whitworth University

© 2021 Independent Colleges of Washington

2



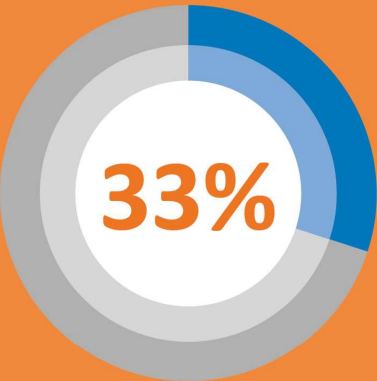

Member Campuses



Gonzaga University • Heritage University • Pacific Lutheran University • Saint Martin's University • Seattle Pacific University
Seattle University • University of Puget Sound • Walla Walla University • Whitman College • Whitworth University

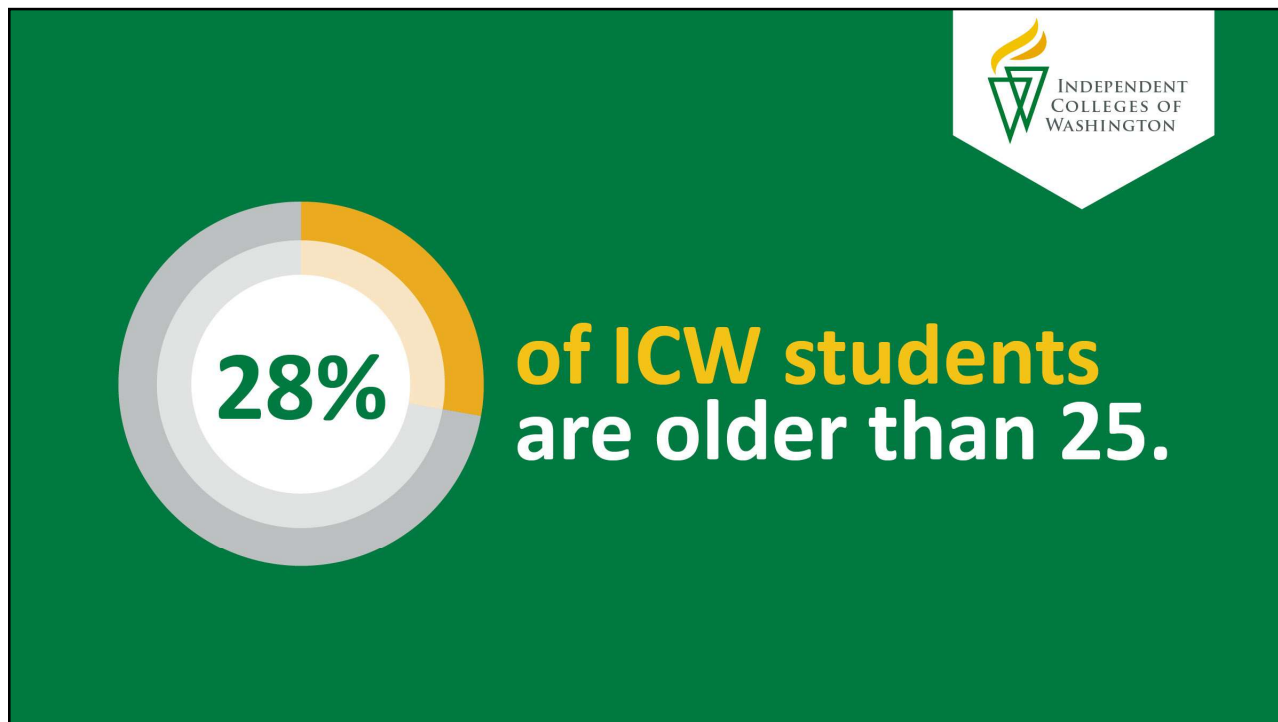
© 2021 Independent Colleges of Washington

3

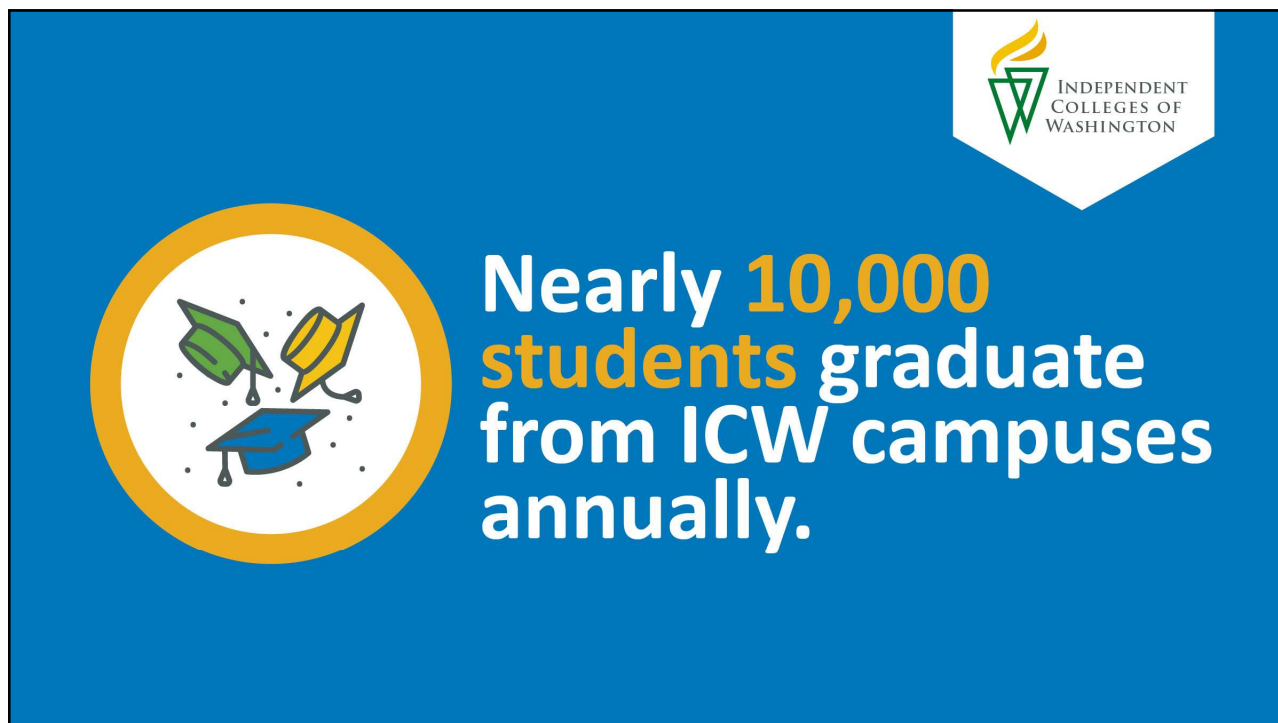


33% of students have transferred credits to our campuses.

4



5



6



9 in 10 students
get aid from
their colleges.

7



Our campuses
can educate more
students to meet
our state's needs.

8



Diversity, Equity, and Inclusion

As we seek a fuller understanding of our nation's true history and work to build equity and inclusion, Independent Colleges of Washington member campuses are holding space, leading, and learning with their communities. For links to our racial justice action plans, see: <https://icwashington.org/equity>

Our campuses sponsor diversity, equity, and inclusion offices that encourage and promote diversity across multiple dimensions:

Gonzaga University	Office of Diversity, Inclusion, Community & Equity	Seattle University	Office of Diversity and Inclusion
Heritage University	Institute for Student Identity Research	University of Puget Sound	Office of Diversity & Inclusion
Pacific Lutheran University	The Diversity Center	Walla Walla University	Office of Diversity and Inclusion
Saint Martin's University	Diversity and Equity Center	Whitman College	Diversity, Equity and Inclusion
Seattle Pacific University	Office of Inclusive Excellence	Whitworth University	Diversity, Equity & Inclusion

Gonzaga University ▪ Heritage University ▪ Pacific Lutheran University ▪ Saint Martin's University ▪ Seattle Pacific University
Seattle University ▪ University of Puget Sound ▪ Walla Walla University ▪ Whitman College ▪ Whitworth University

© 2021 Independent Colleges of Washington

9



New Academic Programs

Undergraduate Majors

- Crime, Law, and Justice (University of Puget Sound)
- Criminal Justice (Pacific Lutheran University)
- Criminology and Criminal Justice (Whitworth University)
- Engineering (Whitworth University)
- Environmental Science (Whitworth University)
- Front-End Design (Whitworth University)
- Gender, Sexuality, and Race (Pacific Lutheran University)
- LPN-BSN *transfers only* (Saint Martin's University)
- Songwriting (University of Puget Sound)
- Strategic Communication (Whitworth University)
- Theology and Religious Studies (Saint Martin's University)
- Women, Gender, and Sexuality Studies (Seattle University)
- Women, Gender, and Ethnic Studies (Saint Martin's University)

Gonzaga University ▪ Heritage University ▪ Pacific Lutheran University ▪ Saint Martin's University ▪ Seattle Pacific University
Seattle University ▪ University of Puget Sound ▪ Walla Walla University ▪ Whitman College ▪ Whitworth University

© 2021 Independent Colleges of Washington

10



INDEPENDENT
COLLEGES OF
WASHINGTON

New Academic Programs

Undergraduate Minors

- Accounting (Saint Martin's University)
- African and African American Studies (Seattle University)
- Asian History (Gonzaga University)
- Critical Race & Ethnic Studies (Gonzaga University)
- Film Studies (Gonzaga University)
- History of Race & Ethnic Communities (Gonzaga University)
- Latin American History (Gonzaga University)
- Latino Studies (Pacific Lutheran University)
- Native Voices (Saint Martin's University)
- Public Health (Saint Martin's University)
- Sustainable Foods Systems (Saint Martin's University)
- Spanish (Saint Martin's University)
- Spanish Heritage (Seattle Pacific University)
- STEM Education (Pacific Lutheran University)
- Trauma Studies (Saint Martin's University)
- Women, Gender, and Sexuality Studies (Seattle University)

Gonzaga University ▪ Heritage University ▪ Pacific Lutheran University ▪ Saint Martin's University ▪ Seattle Pacific University
Seattle University ▪ University of Puget Sound ▪ Walla Walla University ▪ Whitman College ▪ Whitworth University

© 2021 Independent Colleges of Washington

11



INDEPENDENT
COLLEGES OF
WASHINGTON

New Graduate & Certificate Programs

Graduate

- Business Analytics (Seattle University)
- Kinesiology (Pacific Lutheran University)
- Leadership Studies (Saint Martin's University)
- Occupational Therapy (Saint Martin's University)
- Physical Therapy (Whitworth University)
- Public Health (Univ of Puget Sound, *Fall 2021*)
- Social Work (Walla Walla University)

Certificate

- Washington Veteran's to Technology (Saint Martin's University)

Gonzaga University ▪ Heritage University ▪ Pacific Lutheran University ▪ Saint Martin's University ▪ Seattle Pacific University
Seattle University ▪ University of Puget Sound ▪ Walla Walla University ▪ Whitman College ▪ Whitworth University

© 2021 Independent Colleges of Washington

12



INDEPENDENT
COLLEGES OF
WASHINGTON

Investing in High-Demand Fields

- **Gonzaga University's** new **John and Joan Bollier Family Center** – Fall 2021
- **Pacific Lutheran University** new **School of Nursing Clinical Learning & Simulation Center** – 2020
- **Saint Martin's University** opening its new **Nursing Education Center** – 2020
- Expansion of the **Diversity and Equity Center** at **Saint Martin's University**
- **Seattle University** to complete its new **The Jim and Janet Sinegal Center for Science and Innovation** – Fall 2021
- **Whitworth University** to open the **Dana & David Dornsife Health Sciences Center** *opening 2022*
 - Also opened **Whitworth Athletics Leadership Team (WALT) Center** in 2020

Gonzaga University ▪ Heritage University ▪ Pacific Lutheran University ▪ Saint Martin's University ▪ Seattle Pacific University
Seattle University ▪ University of Puget Sound ▪ Walla Walla University ▪ Whitman College ▪ Whitworth University

© 2021 Independent Colleges of Washington

13



INDEPENDENT
COLLEGES OF
WASHINGTON


Supporting Washington Students

- ICW's Strengthening Transfer Pathways to the Liberal Arts in Washington initiative has the potential to affect students who do not currently see transfer to a four-year liberal arts college or university as a viable option.
- Planning grant funding from The Teagle Foundation and The Arthur Vining Davis Foundations.
- Implementation grant proposal submitted summer 2021

Gonzaga University ▪ Heritage University ▪ Pacific Lutheran University ▪ Saint Martin's University ▪ Seattle Pacific University
Seattle University ▪ University of Puget Sound ▪ Walla Walla University ▪ Whitman College ▪ Whitworth University

© 2021 Independent Colleges of Washington

14



Resources for Counselors

<https://icwashington.org/schoolcounselors>

Students' Admissions Questions Answered

- Fall 2021 First-Year Students**
Do you want to enroll in Fall 2021? This update is for you.
[READ MORE](#)
- AY 2020-21 Transfer Students**
Are you a community college student looking to transfer? Click below.
[READ MORE](#)
- Dual Credit High School Students**
Are you a high school student also pursuing college credit? Click below.
[READ MORE](#)
- Accessing Admissions Info**
Looking for Gonzaga, Heritage, PLL, Saint Martin's, SPU, Seattle U., Puget Sound, Walla Walla U., Whitman & Whitworth. We have you covered.
[READ MORE](#)

A Message from Independent Colleges of Washington

You continue to be on our minds. As you work with our young adults in these tumultuous times, thank you for the good work you do in counseling and supporting Washington State's high school students.

We are here collectively and as individual colleges and universities, to help your current and future students achieve their goals, navigate this crisis, and plan for their futures. You are not alone. We are in this with you and for you.

As your partners in the work of guiding students to post-secondary education and training, we want to offer our support to you as well. Should you have admission or financial aid questions, please contact us.

Thank you for your dedicated work to the students, and to your communities. We look forward to continued work together.

Gonzaga University ▪ Heritage University ▪ Pacific Lutheran University ▪ Saint Martin's University ▪ Seattle Pacific University
Seattle University ▪ University of Puget Sound ▪ Walla Walla University ▪ Whitman College ▪ Whitworth University

© 2021 Independent Colleges of Washington

15




INVESTING IN WASHINGTON'S FUTURE ONE STUDENT AT A TIME

CYNTHIA SANCHEZ
SAINT MARTIN'S UNIVERSITY

<https://icwashington.org/StudentStories>

16



Transfer Counselors

Member Campus	Transfer Staff	Contact
Gonzaga University	Audrey Minton	minton@gonzaga.edu
Heritage University	Miriam Soto Guillen	Soto-Guil_M@heritage.edu
Pacific Lutheran University	Jordan Pike	jordan.pike@plu.edu
Saint Martin's University	John Yoshimura-Langston	jlangston@stmartin.edu
Seattle Pacific University	Stephen York	admstephen@spu.edu
Seattle University	Mallory Torgerson-Preuitt	torgersm@seattleu.edu
University of Puget Sound	Torri Henson	thenson@pugetsound.edu
Walla Walla University	Gerry Larson	gerry@wallawalla.edu
Whitman College	Brian Choe	choebs@whitman.edu
Whitworth University	Reagan Kissel	rkissel@whitworth.edu

Gonzaga University ▪ Heritage University ▪ Pacific Lutheran University ▪ Saint Martin's University ▪ Seattle Pacific University
Seattle University ▪ University of Puget Sound ▪ Walla Walla University ▪ Whitman College ▪ Whitworth University

© 2019 Independent Colleges of Washington

17



Questions?

If you have any questions, please contact:

- **Shea Hamilton, Ph.D.**
Director of Policy and Public Affairs
Independent Colleges of Washington
Email: shea@icwashington.org

Gonzaga University ▪ Heritage University ▪ Pacific Lutheran University ▪ Saint Martin's University ▪ Seattle Pacific University
Seattle University ▪ University of Puget Sound ▪ Walla Walla University ▪ Whitman College ▪ Whitworth University

© 2020 Independent Colleges of Washington

18



CENTRAL WASHINGTON UNIVERSITY

EASTERN WASHINGTON UNIVERSITY

THE EVERGREEN STATE COLLEGE

UNIVERSITY OF WASHINGTON

WASHINGTON STATE UNIVERSITY

WESTERN WASHINGTON UNIVERSITY

WASHINGTON STATE

Council of
Presidents

ICRC Fall Meeting
October 2021

Julie Garver

Senior Director of Policy and Academic Affairs



Diversity, Equity and Inclusion

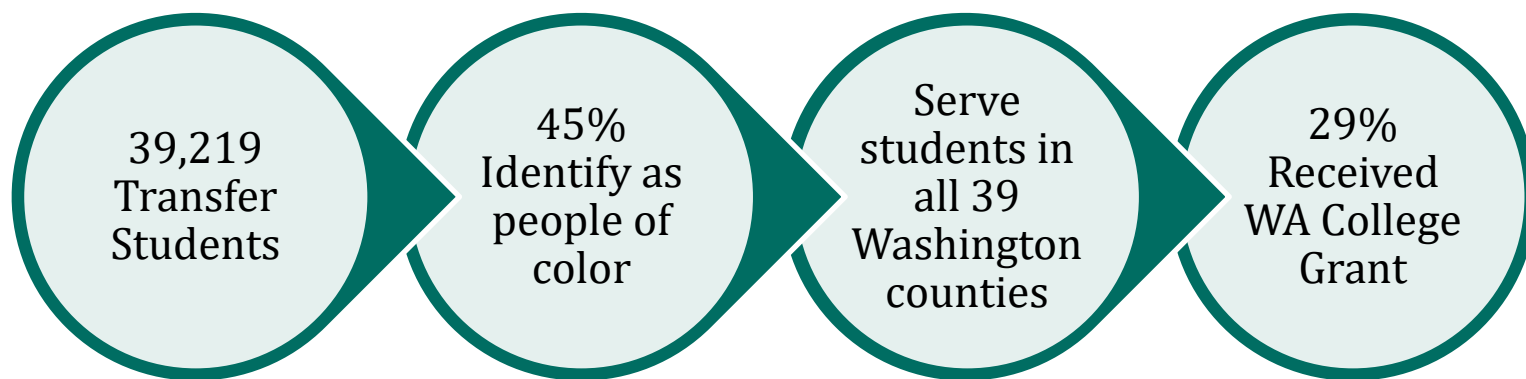
The Council of Presidents stands in solidarity with all those across our nation who experience discrimination, bigotry, prejudice, violence, and hate due to their race, ethnicity, national origin, sexual orientation, gender identity or expression, disability, age, religion, and socioeconomic status.

We remain actively committed to continuing and advancing efforts to promote greater diversity, equity, and inclusion on our campuses that align with their missions to serve Washington residents and the local communities in which they reside.

Our work is grounded in the belief that faculty, staff, and students benefit from a vibrant, rich learning community composed of a broad cross-section of individuals of all different perspectives. Success in an interdependent, globally connected world depends critically and urgently on our ability to foster equity of access and outcome related to our 21st Century ideals of opportunity and discovery.



We Serve a Diverse Student Population: 2018-19





Updates

Looking to 2022

Winter, Spring and Fall 2022 applications are open **NOW!**

- Our campuses are planning for primarily **in-person instruction, services and activities** while providing opportunities for those who want to learn remotely now and in the future.
- All institutions have announced **mandatory COVID-19 vaccine requirements** with allowable exemptions. Institutions are setting **mask policies** that incorporate federal, state, and local public health directives and standards.
- Protecting the health of our students, faculty, and staff will continue to guide our decision-making in the coming months. **Our students' learning, personal well-being, and life success remain our top priority.**
- Please encourage students who have questions – ranging from admissions to housing and dining to technology to financial aid – to reach out with questions or concerns. **We are here to help!**

Admissions

- **Revised:** WSAC Admissions Standards
 - Effective August 1, 2021
 - Adds clarity to practices, process and policies
 - Adds context for emerging issues including holistic admissions
 - Creates an annual review process



Transfer

- **Participate in** Direct Transfer Agreement Associate Degree (DTA and the Associate of Science – Transfer Degree (AS-T)).
 - Includes nine statewide Major Related Program transfer degrees. Biology, Business, Computer Science, Construction Management, Engineer, Math Education, Music, Nursing and Pre-Nursing.
- Sector **continues to update** transfer resources, including:
 - Sector Transfer Fact Sheet
 - COVID-19 FAQ and institution resources
- Participating in **Student Mobility in Washington**, joint state task force focused on increasing student mobility, especially for students of color to increase equity in persistence and completion rates.
- Prior to the pandemic, COP completed on campus visits with **24** of Washington’s community and technical colleges. Plan to meet with the **remaining 10** colleges in 2022.

New Degrees Implemented

Since Spring 2021 ICRC Meeting

EWU

- Cheney: MS Psychometry, MS Organizational Leadership, MA History, Masters City Management and Planning

UW

- Tacoma: MS Electrical and Computer Engineering, BA Economics and Policy Analysis, BS Civil Engineering

WSU

- Pullman: Masters Applied Economics, MS Business Administration
- Global Campus: Masters Civil Engineering

WWU

- BS Data Science
- EdD Educational Leadership
- BA Urban Sustainability

Key Takeaways

- We are excited to welcome Washington students to any one of our public four-year college or universities! **We want you!**
- Washington's public four-year college and universities offer high-quality, affordable options in your own backyard! **Let's Grow Our Own in Order to Meet Workforce and State Needs!**
- **Your students are our students.** We are committed to serve all students with a focus on identifying and reducing gaps among student populations.



Legislative
Session

2022 Supplemental Legislative Session

- **November 2, 2021**
Election Day
- **November 2021**
Next Revenue Forecast
- **December 2021**
Governor Releases Supplemental
Operating & Capital Budgets
- **January 10, 2022**
Legislature Convenes
- **March 12, 2022**
Legislature Adjourns



Potential Areas of Focus

- Pandemic Impacts
- Dual Credit
- Apprenticeships
- Maintain
Investments



Future Topics

Future Topics of Interest for Sector

- CLEP credits applied to the DTA within the 15 gray credit limit by community and technical colleges.
- Understanding what is meant/intended when community and technical colleges mean express concerns about four-year institutions “unpacking” the DTA.



For More
Information

Contact Information

Julie Garver

Senior Director of Policy & Academic Affairs

Council of Presidents

360-292-4102

jgarver@councilofpresidents.org

<http://www.councilofpresidents.org>



*JOINT
TRANSFER
COUNCIL
UPDATE*

ICRC Fall Meeting, October 2021



Updates

- Topics of Discussion
 - Diversifying the Council
 - Pandemic recovery discussion around transfer
 - Ongoing engagement with WSAC
 - SHEEO/Gardner Institute WSAC led Transfer Task Force
 - Potential consideration of a winter meeting
 - JTC document repository created



Statewide Transfer Work

- Fall 2021 Statewide Transfer Degree Reviews
 - Computer Science: DTA/MRP, AS-T Track 2 and New AS-T/MRP
 - New DTA/MRP: Psychology
- Anticipated Statewide Transfer Degrees
 - LPN to BSN
 - DTA/MRP Humanities discipline
- Review of exploratory allied health degree pathway focused career/academic advising tool.



Joint Transfer Council

- Next Meeting
 - Hybrid Meeting, November 15, 2021
- JTC Webpage
 - <https://www.sbctc.edu/colleges-staff/programs-services/transfer/joint-transfer-council.aspx>